



# **GENERAL CONDITIONS, REQUIREMENTS & SPECIFICATIONS for Drivers Challenges**

**November ~~2019~~ April 2025**

**(Changes from 2019 denoted in red)**

# INDEX

---

ENTRY REQUIREMENTS .....	3
EQUIPMENT .....	4
GENERAL CONDITIONS.....	5
OFFICIALS.....	6
TABLE OF PENALTIES .....	7
EXERCISE No 1: SHRINKING SERPENTINE COURSE .....	8
EXERCISE No 2: ESTIMATING CLEARANCE .....	9
EXERCISE No 3: PARALLEL PARKING .....	10
EXERCISE No 4: BAY PARKING.....	11
EXERCISE No 5: STRAIGHT LINE DRIVING .....	12
EXERCISE No 6L& 6R: SHRINKING CHICANE.....	13
EXERCISE No 7: LANE CHANGE .....	14
EXERCISE No 8: WEAVING LANE CHANGE .....	15
EXERCISE No 9: LANE CHANGE .....	16
EXERCISE No 10: BRAKING .....	17
SCORE SHEET: THEORY TEST .....	18
SCORE SHEET: EXERCISE 1.....	19
READY RECKONERS: EXERCISE 2 - ESTIMATING CLEARANCES.....	20
SCORE SHEET 1: EXERCISE 2A.....	21
SCORE SHEET 2: EXERCISE 2A.....	22
SCORE SHEET: EXERCISE 3.....	23
SCORE SHEET: EXERCISE 4.....	24
SCORE SHEET: EXERCISE 5.....	25
SCORE SHEET: EXERCISE 6L, 6R, 7.....	26
SCORE SHEET: EXERCISE 8, 9.....	27
SCORE SHEET: EXERCISE 10.....	28
APPENDIX A: EXERCISE 5 SETUP SHEET.....	29

# ENTRY REQUIREMENTS

---

## DRIVERS

- ALL competitors are to be present for a Drivers Briefing prior to the commencement of the Challenge.
- ALL competitors must have a full class 2 licence.
- The UFBA Challenge Panel shall reserve the right to add “wild card” entries to make up the numbers if required.
- The UFBA Challenge Panel shall also have the right to restrict entries should this prove necessary.

## UNIFORM

- All participants shall wear ~~New Zealand Fire Service~~ Fire and Emergency NZ (FENZ) level 1 uniform (except for helmets and gloves) or ~~New Zealand Fire Service~~ FENZ dark blues.
- Participants from Rural and Industrial Brigades shall wear their level 1 uniform or recognised equivalent.

## THE CHALLENGE

The Driving Challenge shall consist of:

1. A set of multi choice questions taken from the Heavy Traffic Class 2 Road Code, the New Zealand Fire Service drivers manual, basic pump operation, ECO control, and general Road Code.
2. Driving skills as contained in these rules.
3. Categories:
  - a) Individual competitor.
  - b) Rookie Category (applicable only to the National Challenge): the winner of the Rookie Category will be the best placed competitor that is competing at the National Drivers Challenge for the first time.
  - c) Team Aggregate Category: the top three placing team members, whose aggregate overall penalties are used to determine Team Aggregate placings.
    - I. The make-up of a Team Aggregate must compromise of members from within one brigade.
    - II. Team numbers will consist of a minimum of three and a maximum of five competitors.

# EQUIPMENT

---

1. Required amount of fire appliances (one spare recommended)
2. Sufficient Score Sheets and Clipboards
3. Competitor Identification Numbers
4. ~~Caravan or similar~~ Suitable Area for Field Secretary with power
5. Ezy-Up shelters or similar for Isolation Areas (14 recommended)
6. Sheltered Catering Area
7. Sufficient Portable Radios: one per event and one controller
8. Sufficient Hi Viz Vests: one **available** per official
9. Sufficient Tape Measures
10. 2 x Heavy String Lines
11. Chalk, **Crayon & Duct Tape**
12. Electrical tape for marking appliances
- ~~13. Sufficient cones – no larger than 450mm (7 stick cones, 220 small cones, 26 large cones) as itemised below:~~
  - Exercise 1: 6 x Orange Tall/Skinny Cones & 4 x Red Small Cones
  - Exercise 2: 2 x 1.5mtr Marker Poles
  - Exercise 3: n/a
  - Exercise 4: 2 x Orange Road Cones & 5 x Yellow Small Cones
  - Exercise 5: 12 x Orange Road Cones
  - Exercise 6L: 2 x Orange Road Cones, 15 x Red Small Cones & 16 x Yellow Small Cones
  - Exercise 6R: 2 x Orange Road Cones, 15 x Red Small Cones & 16 x Yellow Small Cones
  - Exercise 7: 9 x Orange Road Cones, 16 x Red Small Cones & 15 x Yellow Small Cones
  - Exercise 8: 3 x Orange Road Cones, 4 x Orange Small Cones, 16 x Red Small Cones & 15 x Yellow Small Cones
  - Exercise 9: 9 x Orange Road Cones, 16 x Red Small Cones & 15 x Yellow Small Cones
  - Exercise 10: 2 x Orange Road Cones.
- ~~14. 4 x 1.5 metre poles for Exercise 2~~
15. Sufficient lengths of hose or similar (200 metres **for** Kerb in Exercise 1, **50 metres for** Kerb and No Pass Line in Exercise 3, **31 metres for** Kerb in Exercise 4). Minimum of
16. 50-60 metres of 100x50mm timber – Exercise 3 and 4 side markers and L frames to hold end barricades (6 required)
17. Ply (or similar e.g., Pallets) for rear wall in Exercise 4 – 1 @ 3000mm x 1200mm
18. Ply (or similar e.g., Pallets) for front and rear wall in Exercise 3 – 1 @ 3000mm x 1200mm and 1 @ 2600mm x 1200mm
19. **4 2** x Upright front corner indicator poles for Exercise 4 spring poles
20. **4 2** x Magnetic Strip or Measuring Aids for Exercises 3 and 4
21. Cat's eyes for Exercise 5 (36 white and 6 yellow)
22. ~~3~~**1** x Stopwatches for **each setup of** Exercises 1,3,4 and 5
23. ~~2~~**1** x GPS Units that indicate speed for Exercises 6, 7, 8, 9 **per appliance used**
24. 3 sets of lights for Exercises 7-9 and appropriate extension leads. Generators if power not readily available
25. Brake meter and associated equipment for Exercise 10

**Note: Equipment for Exercises 1-5 will need to be doubled for operating 2 scenarios of each event at once.**

# GENERAL CONDITIONS

---

- ~~1) The wearing of seatbelts is compulsory. Failure to do so will result in a 100 point penalty for each occurrence.~~
- ~~2) Competitors must use mirrors when reversing at all times. Heads out of windows will not be permitted.~~
- 3) Any competitor found interfering with or altering their score sheet will be disqualified.
- 4) The compulsory theory test component can be completed before, ~~or~~ during, ~~or~~ after the challenge and will count towards the final score.
- 5) The JUDICIAL COMMITTEE shall ~~consist~~ comprise of the following:
  - Challenge Panel Leader (Will act as the Chair).
  - Two other members of the Challenge Panel.
  - One ~~board member~~ nominated by the UFBA Management.Note – All of the above must be available for the duration of the event
- 6) Any protest must be lodged within ~~thirty twenty (30 20)~~ minutes after completion of that evolution as recorded on the scoresheet. Such protest must be lodged on the appropriate form which shall be available from the Field Secretary and must be accompanied by a fee of ~~\$40~~ \$100 cash. Intent to protest, must be notified to the Referee of that location within those 20 minutes.
- 7) The Judicial Committee's decision shall be final.
- 8) Prior to the commencement of Events 1-5, the appliances will be available for inspection with their Event Number/s indicated on the dash/windscreen. At no other times during the event will the competitors be able to inspect the appliances or event conditions. After this will be a briefing prior the commencement of the challenge.
- 9) All diagrams and measurements within the current rules are a guideline and are subject to the final decision on the day by the judges and Judicial Committee to ensure that the challenge is feasible and safe for all involved.
- 10) At the conclusion of each evolution, Officials must initial, enter the time the competitor completed the exercise, then complete the score sheet – this will then be initialled by the competitor.
- 11) All competitors will be allocated their respective muster/isolation point/s at each evolution by the judge in charge of that evolution. Competitors are strictly required to remain in this area until being released by the judge.
- ~~12) ALL competitors shall compete in the spirit of fair play. In the unlikely event that a competitor is identified as not competing fairly, their score may be penalised at the discretion of the Judicial Committee.~~
- 13) The Challenge Panel Leader or ~~his~~ their nominated representative has the right to restrict speeds and/or lengthen dimensions of exercises, due to adverse conditions and/or safety reasons.
- ~~14) Speed is not to exceed 55km/h on any part of the entire circuit. Should this occur, the competitor will be penalised in the next exercise. If the speed limit is exceeded at the end of the evolutions, a penalty will be applied to the last exercise.~~
- 15) Speed penalties for each exercise are measured inside that particular exercise from the start point to the end point.
- ~~16) Observing any exercise from any isolation area will immediately incur a penalty of 100. This penalty can be applied to any competitor by any official or group marshal on the day.~~
- ~~17) Officials are authorised to remove any moveable object that is about to be hit, and then replaced when able to do so.~~ Competitors will be made to stop the moment they touch a cone, marker, kerb, barricade, or crossing the vertical plane (indicating a side barrier) on the course and forced to realign.
- 18) The use of cruise control or electronic speed limiting in any exercise is not permitted and will incur a ~~penalty of 100~~ Penalty 19 per infraction. This includes the use of any performance or gear selector modes. Events 6-10 are to be completed using D – Drive (if using an automatic transmission).
- 19) In the event of a tie ~~on~~ in events 6-9, the results from event 10 will be used as the definitive to determine the result for the final placings.
- ~~20) Taillights will be taped up by the Challenge Panel for events 3 & 4.~~
- 21) Measuring point(s) will be pre-determined prior to challenge commencement and marked as such on the appliance(s) with tape.
- 22) Kerb distance and parallel offset measuring points to be 1) immediately behind cab on locker body work and 2) immediately behind rear wheel.
- 23) Side walls to consist of 100x50mm lengths lying flat on the ground. Front corners to be marked with polystyrene pipe or similar. Back wall and Barricades to consist of a physical wall of a different colour to that of the ground.
- 24) A tall cone will be placed on the driver's side of the road 200m prior the start of each of events 6-9. As the appliance passes this cone, the GPS reading will be called out. The driver if they wish, may ask once more prior this cone on each event to confirm their speed adjustment by the use of the word "Speed".
- 25) Starting points for both Drivers Side Tyres will be marked with tape on the ground for Events 1 & 3. Competitors will be guided to these marks by the official once they have completed their scoring evolution of the event.

# OFFICIALS

---

Examiner / Marker for written questionnaire	1
Field Secretary	2
Exercise 1	2
Exercise 2	<del>3</del> 2
Exercise 3	3
Exercise 4	2
Exercise 5	<del>3</del> 2
Exercise 6L	<del>1</del> 2
Exercise 6R	<del>1</del> 2
Exercise 7	2
Exercise 8	2
Exercise 9	2
Exercise 10	1
Exercises 6 – 9 Appliance Judge <b>per Appliance</b>	1
Exercises 6 – 9 GPS Judge <b>per Appliance</b>	1
Relief Judges	2
Course / Comms Coordinator	2
<del>Equipment Officer</del>	<del>1</del>
Local Helpers (as <del>Muster Point</del> Isolation Marshalls)	1 per group of competitors

Once appointed to an exercise, judges will remain in that position until the completion of the Challenge. Officials shall:

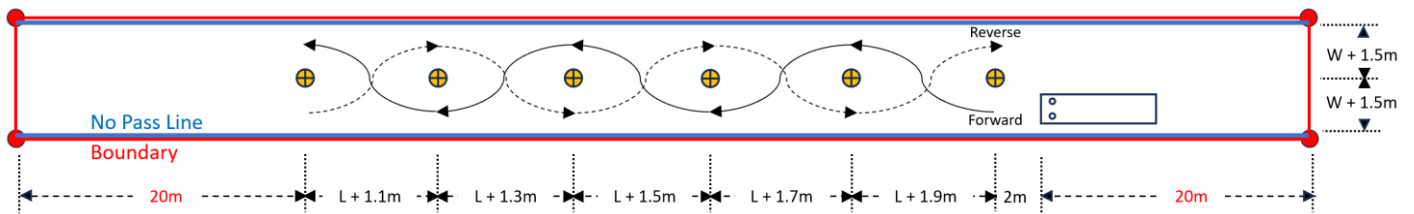
- Ensure they fully understand the exercise rules, penalties, penalty sheets and set-up for which they are officiating.
- Meet with the Challenge Panel at a directed time and location prior to the Challenge commencement.
- Attend the ~~Drivers~~ **Drivers Officials** Briefing.

# TABLE OF PENALTIES

**N.B.** Any penalty can be applied to any event by the Officials if required.

No	Description	Penalties per Breach
1	In the case of any competitor using disrespectful language or abuse	Disqualification from that Event
2	Striking a cone	50
3	Striking a Marker	25
4	Realignment or a complete stop	25
5	White Cats Eyes (Event 5)	10
6	Coloured Cats Eyes (Event 5)	10
7	Touching a Kerb	100
8	Touching no Pass Line	75
9	Striking a barricade, front marker or crossing the vertical plane indicating a wall	Penalty 19 per breach
10	Overspeed Abort (above 55kph) or Under speed (Under 40kph) in Events 6L,6R,7,8,9	Penalty 19 per event
11	Incorrect Lane Change in Events 7,8,9	Penalty 19 per event
12	Tyres fully outside the No Pass Line will be deemed as going outside the boundary in Events 1,3,	Penalty 19 per breach
13	Tyres fully outside the outer boundary cones in Events 6L,6R,7,8,9	Penalty 19 per event
14	Use of Cruise Control or Gear Selector (if using an Automatic Transmission) in Events 6L,6R,7,8,9,10	Penalty 19 per event
15	Head outside of Window	Penalty 19 per event
16	Not Wearing a Seatbelt	Penalty 19 per event
17	Failure to weave in Event 8	Penalty 19 per event
18	Breach of Isolation	Penalty 19 per event
19	Not completing any Event as per the intent, or attempting to gain an advantage	300 original breach, 100 per additional breach maxing at 500 points per Event

# EVENT 1 – SHRINKING SERPENTINE



The driver must negotiate the course in a continuous motion in each direction. The driver will proceed forward through the course starting on the left-hand side of the course and then reverse the appliance back through the course from the opposite side to which they exited.

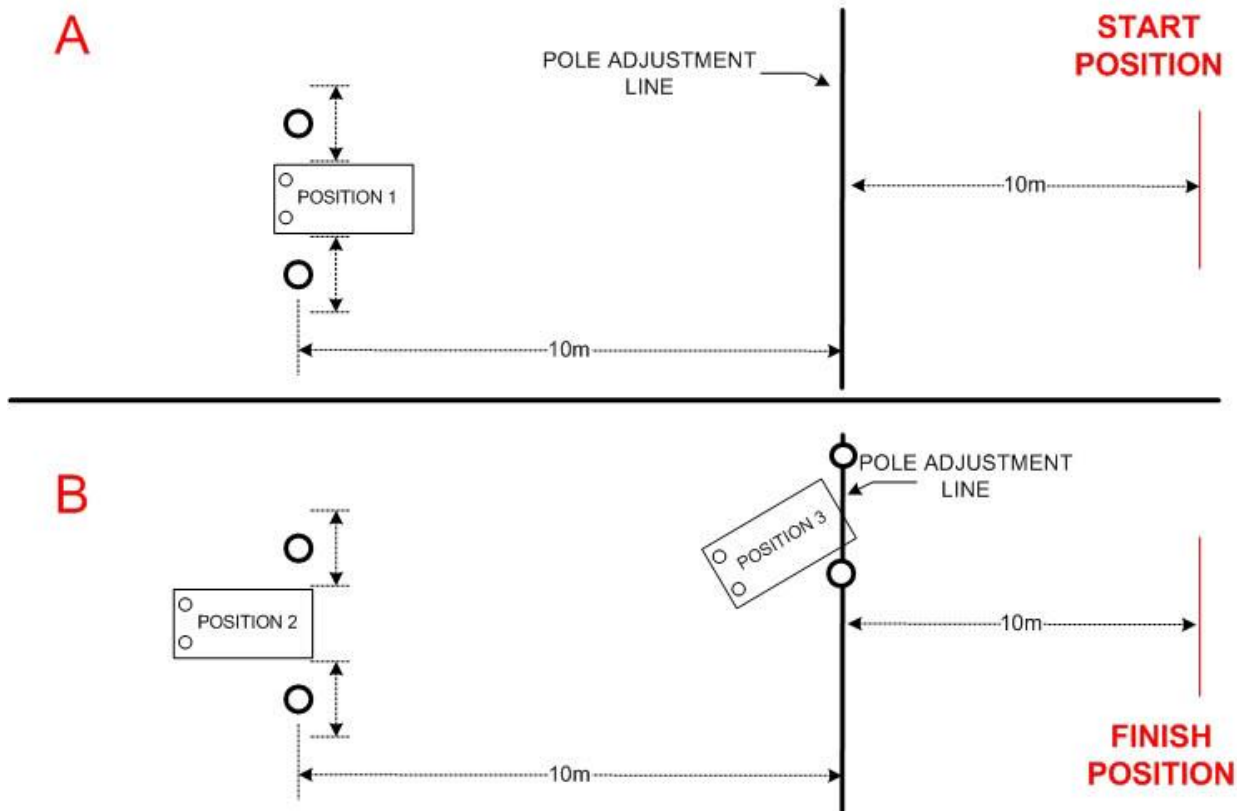
Any cone displaced will be replaced in its original position before the next pass is attempted. **Any time that a competitor contacts a cone, then they will be forced to realign.**

**Penalties will be accumulated for:**

- **Realignment (forward or reverse)**
- **Stopping and continuing in the same direction**
- **Striking (cones)**
- **Touching the kerb with the tyre or crossing the kerb line (Competitor will be forced to realign)**
- **Wrong side of the course**



## EVENT 2 – ESTIMATING CLEARANCES



**Part A:** From the start position, the driver will manoeuvre his/her appliance to a point 10m from the markers and stop. Both markers will be placed by the official. The driver will then give instructions for the marker(s) to be moved to a position, which he/she estimates to be equivalent to the overall width of his/her vehicle plus 150mm maximum, per side.

When the competitor is satisfied with the clearance, the official will measure the distance between the two markers. If this distance is equal to or less than the overall width of the appliance (at the pre-determined measuring points), the run will be paused and penalties accumulated as per the ready reckoner. The driver's side marker will then be removed, and the competitor will proceed forward and position the appliance as close to the near side marker as he/she can (at the pre-determined measuring point). Any further penalties will then be accumulated.

If the distance is greater than the overall width of the appliance (at the pre-determined marking points), the competitor will then proceed with the appliance up to the markers and stop within the confines of the markers.

**Part B:** Following the above, the driver will move forward until the rear of the appliance is level with the markers he/she has just estimated. The official will then position one marker directly in line with the driver's side of the appliance at the pole adjustment line.

The driver will then indicate the position of the other marker (to be driver's side marker) using only his/her mirrors. When the driver is satisfied with the clearance, the official will measure the distance between the two markers. If this distance is equal to or less than the overall width of the appliance (at the pre-determined measuring points), the run will be paused and penalties accumulated as per the ready reckoner. The driver's side marker will then be removed, and the competitor will reverse and position the appliance as close to the near side marker as he/she can (at the pre-determined measuring point). Any further penalties will then be accumulated.

If the distance is greater than the overall width of the appliance (at the pre-determined marking points), the competitor will then reverse the appliance back to the markers and stop within the confines of the mark

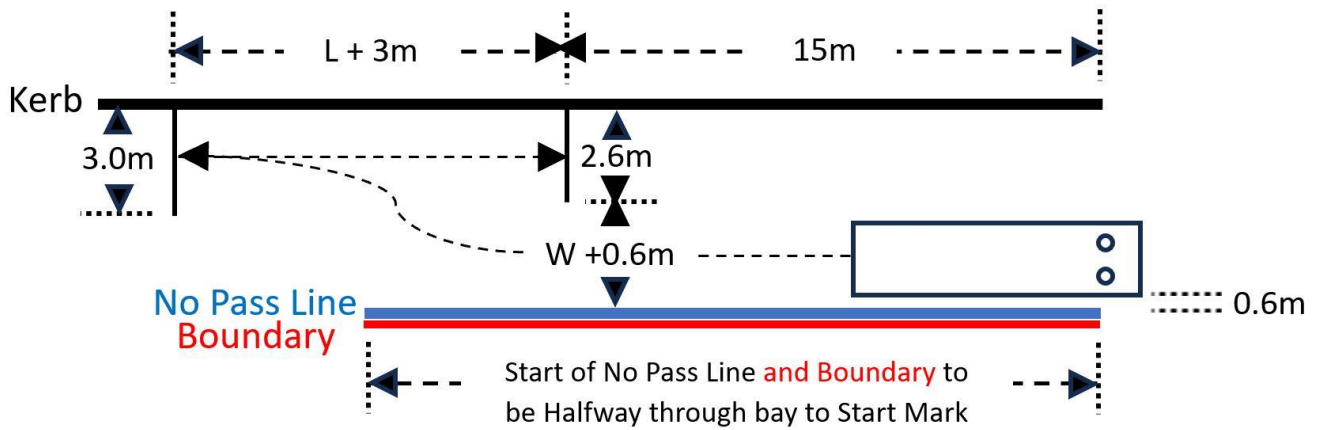
Penalties will be accumulated as per the Ready Reckoner and also for:

- Striking any side markers

### Notes

1. Measuring point(s) will be pre-determined prior to challenge commencement and marked as such on the appliance with tape. Measuring points on an Iveco appliance will be the outside of the front indicators and the outside of the handle of the rear lockers.
2. Measurements will be taken on both sides (from the pre-determined measuring points to the markers) and penalties accumulated.
3. The driver's side window must be up.

# EVENT 3 – PARALLEL PARKING



The driver will reverse the appliance from the start position into the parking area, as indicated by the barriers with. The driver is permitted a maximum of two backward movements AND two forward movements to position the appliance in the parking area. A change of direction signals the end of a movement. Any extra movements will incur a **penalty of 10 realignment penalty** per movement.

Once parked, the appliance's position will be measured to calculate how far off centre within the front and rear confines the appliance is, as well as how far off the kerb and how parallel to the kerb the appliance is. Measurements will be taken from the rear of the appliance at the pre-determined measuring points, and on the near side of the appliance near the front and rear at the pre-determined measuring points. **In the event that the appliance is parked on or over the kerb, then distances B and C will still be recorded, but they will be added together for a new score value. Note "over kerb" is defined as any part of the appliance at the designated measuring positions.**

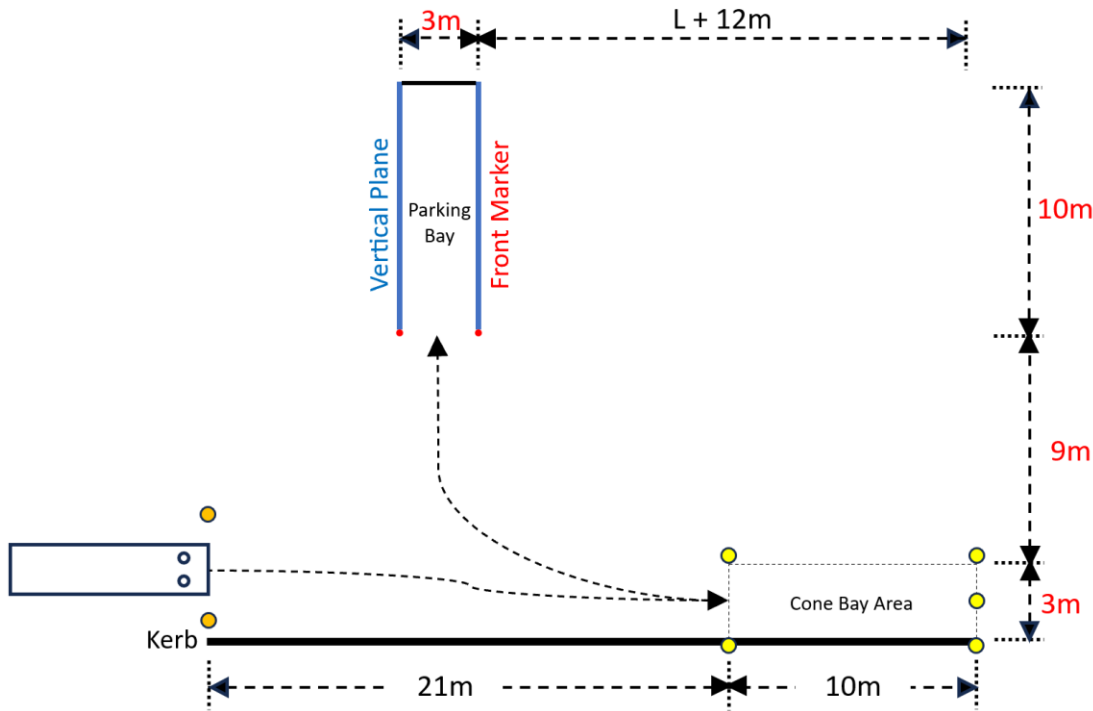
The appliance is intended to be stopped within 100-300mm of the kerb with a maximum tolerance of 1mtr (RR3B), as well as being parallel using measurements B&C with a 50mm tolerance (RR3C). It is to be properly centred within the parking area using measurement A with a tolerance of 50mm (RR3A).

On leaving the parking area the driver is then permitted another maximum of two forward movements AND two backward movements to remove the appliance from the parking area and place the appliance back at the start position. Any extra movements will incur a **penalty of 10 realignment penalty** per movement.

This exercise has a time limit of 3 minutes to park. Once 3 minutes has elapsed, the driver will be told to stop, and the measurements taken. **Any appliance touching or over the Kerb at the time of 3mins, will also incur Penalty 19.**

RR3A		RR3B		RR3C	
A = 1500mm		B&C = 100-300mm	B +/-	C tolerance	
0	0	0	50	0	0
50	0	50	50	50	0
51	25	51	25	51	75
100	25	100	25	100	75
101	50	101	0	101	150
150	50	300	0	150	150
151	75	301	25	151	225
200	75	375	25	200	225
201	100	376	50	201	300
250	100	450	50	4000	300
251	125	451	75		
300	125	525	75		
301	150	526	100		
350	150	600	100		
351	175	601	125		
400	175	675	125		
401	200	676	150		
450	200	750	150		
451	225	751	175		
500	225	825	175		
501	250	826	200		
550	250	900	200		
551	275	901	225		
600	275	975	225		
650	300	976	250		
2000	300	1050	250		
		1051	275		
		1125	275		
		1126	300		
		2000	300		

# EVENT 4 – BAY PARKING



Driver starts between the cones at the start position, moves forward into cone bay area until the rear of the appliance is inside the cones, then reverses into the parking bay without striking kerb, cones, front markers, side boundaries (as indicated by the vertical plane) or rear barricade. This includes the inside vertical plane from any ground marker. The driver will stop when they believe that they are in the correct position and measurements will be made. Once measurements are made, the driver will then drive forward out of the parking bay, into the cone bay area until the rear of the appliance is past the cones, then reverse through the start cones.

The appliance must be stopped within 100-450mm of the rear barricade and properly-centred 250-350mm off of the near side vertical plane within the side boundary markers. A variation of 50mm is permitted for centring the appliance.

This exercise has a time limit of 3 minutes to park. Once 3 minutes has elapsed, the driver will be told to stop, and the measurements taken. Failure to get all measuring points inside the parking bay will result in penalty 19 being applied per

### Notes:

1. Measuring point(s) will be pre-determined prior to challenge commencement and marked as such on the appliance with tape.
2. Side walls to consist of 100x50mm lengths lying flat on the ground. Front corners to be marked with polystyrene pipe or similar. Back wall to consist of a physical wall of a different colour to that of the ground.
3. Off centre distance and parallel offset measuring points to be 1-C) immediately behind cab on locker body work and 2-B) immediately behind rear wheel measuring point.

RR4A		RR4B		RR4C	
A = 101-300mm		B&C +/- 300mm		B +/- C tolerance	
0	50	0	0	0	0
50	50	50	0	50	0
51	25	51	50	51	75
100	25	100	50	100	75
101	0	101	100	101	150
300	0	150	100	150	150
301	25	151	150	151	225
375	25	200	150	200	225
376	50	201	200	201	300
450	50	250	200	1000	300
451	75	251	250		
525	75	300	250		
526	100	301	300		
600	100	1000	300		
601	125				
675	125				
676	150				
750	150				
751	175				
825	175				
826	200				
900	200				
901	225				
975	225				
976	250				
1050	250				
1051	275				
1125	275				
1126	300				
3000	300				

# EVENT 5 – STRAIGHT LINE DRIVING

## Forward and Backward

The driver will proceed through the course from the designated start position in one continuous motion forward, and in one continuous reverse motion into the mid event parking area.

The driver will then proceed through the course, in one continuous motion forward, and in one continuous reverse motion into the start and finish area.

On the first forward movement, the left set of wheels will pass between the cats' eyes and on the first reverse movement, the right wheels will pass between the cats' eyes.

On the second forward movement, the right set of wheels will pass between the cats' eyes and on the second reverse movement, the left wheels will pass between the cats' eyes.

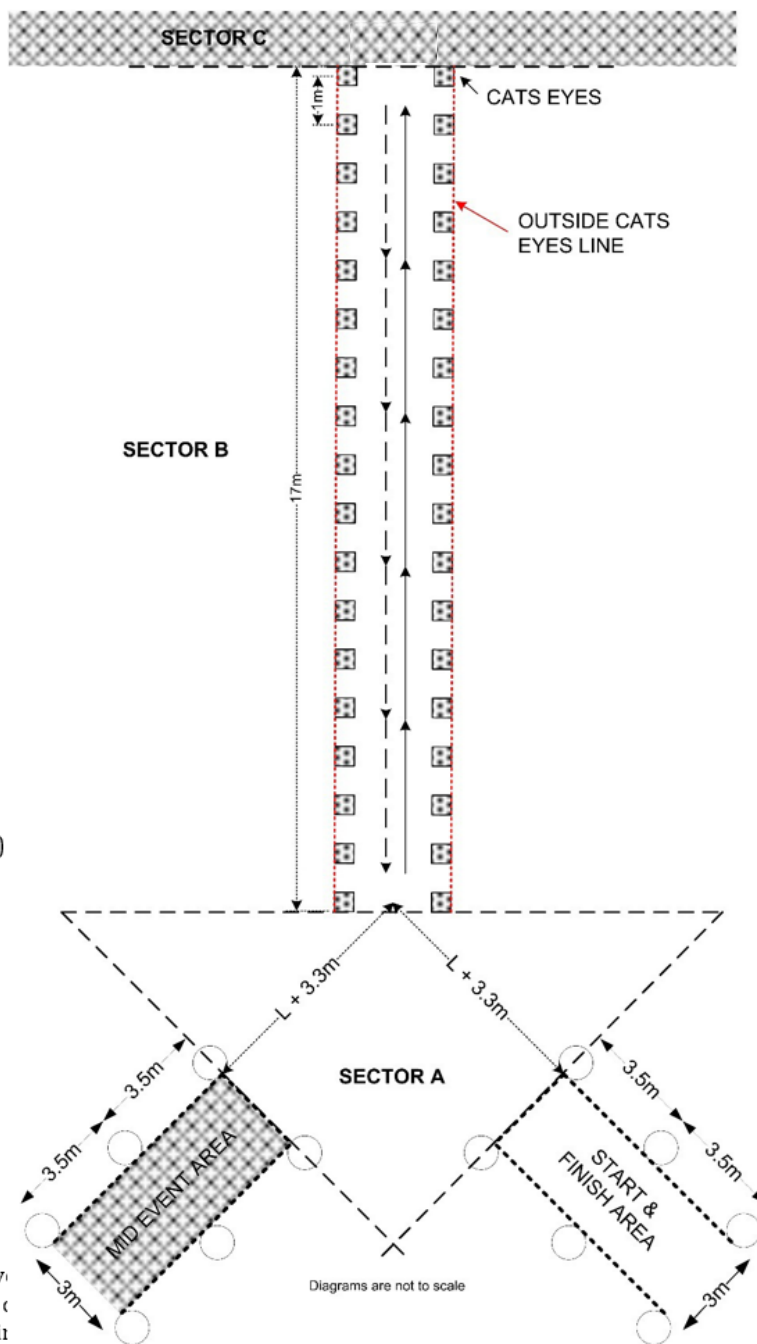
Penalties will be accumulated for:

- Stopping and continuing in the same direction
  - Each realignment
  - Striking a cat's eye (front or back wheels)
  - Striking a parking bay cone
  - Negotiating the cats eyes with the wrong set of wheels
- Non completion of event due time allotment
- Not completing the event as described
- Not fully entering start/finish & mid areas completely
- Crossing the outside cats eye line with front wheels

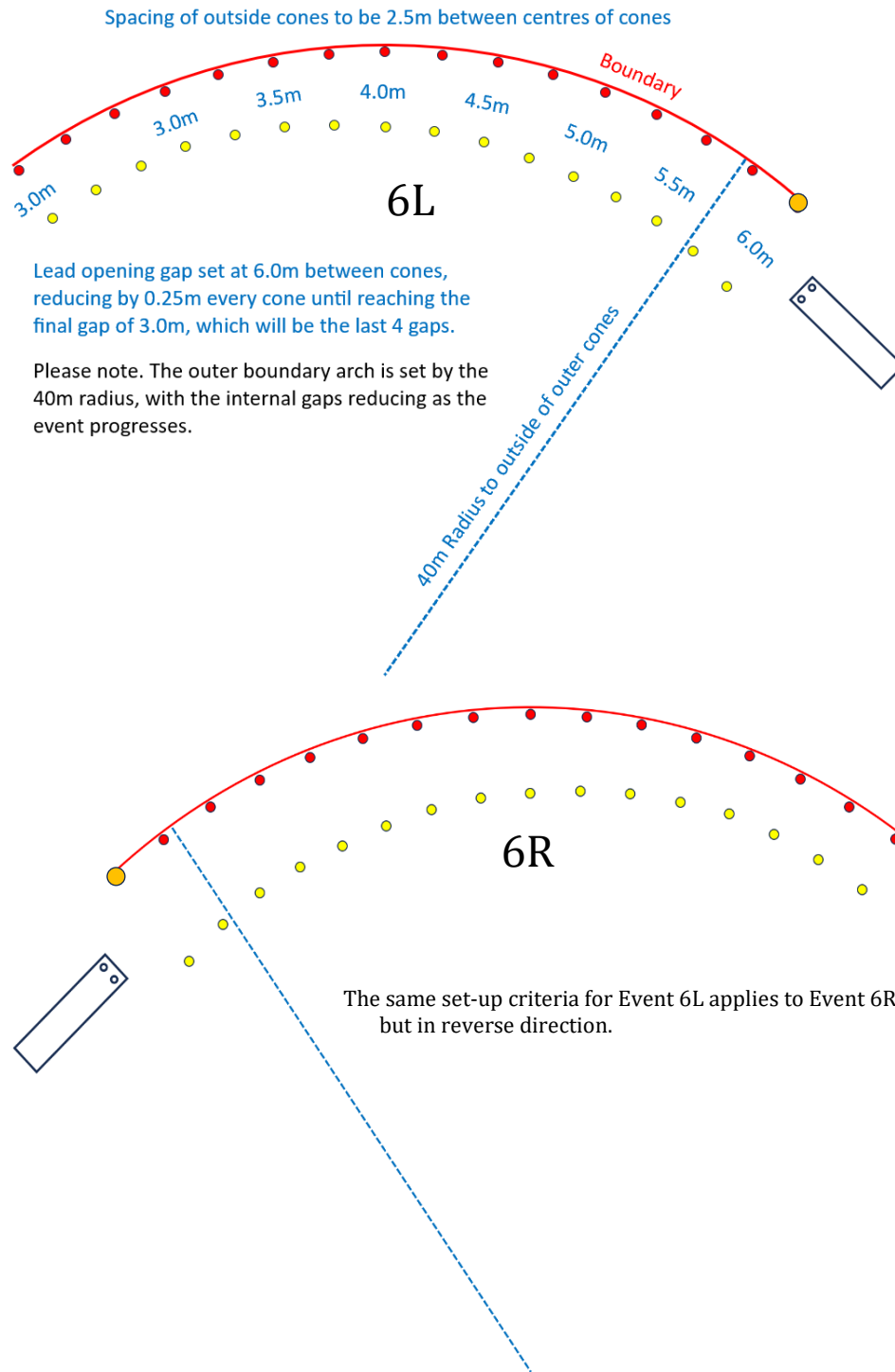
This exercise has a time limit of 4:30 minutes to complete. Non completion of the exercise will result in a penalty of 30 per sector not completed. When travelling forward, the front and back tyres striking cats eyes will result in 25 penalty points per strike. Hitting garage cones will result in 25 penalty points per strike. Crossing outside the cat's eye line with front wheels will result in 75 penalty points.

Notes:

1. See Appendix C for setup diagram for this exercise.
2. Any cats eye displaced will be replaced in its original position, before the next pass is attempted.
3. Failure to fully complete any sector, as well as not fully entering a start/finish/mid area, will result in penalties for each sector and area combined.
4. Hatched areas of the above diagram (Section C and Mid Event Area) are exempt from the Stop and Realignment penalties.



# EVENT 6L & 6R – SHRINKING CHICANE



The driver must negotiate the chicane in a continuous motion at a speed not less than 45km/h and not exceeding 55km/h. The vehicle must keep within the boundaries throughout the entire manoeuvre. The top lead in cone will be a tall cone to indicate the high side of the approach chute.

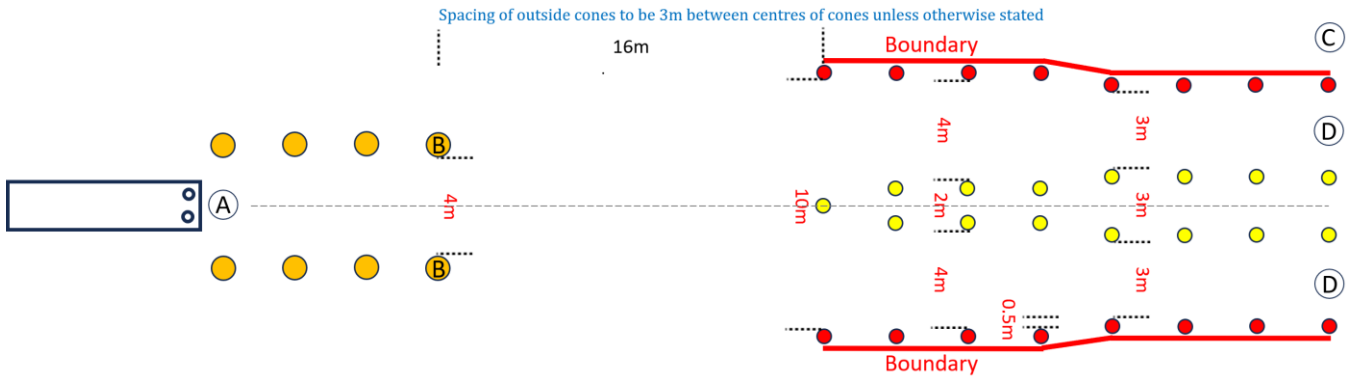
Penalties will be accumulated for:

- Speed less than 40km/h
- Speed less than 45km/h
- Striking a marker
- Moving any part of the vehicle outside the coned boundary
- Using cruise control

Note:

1. If the driver exceeds 55km, the official will call "abort" and a penalty of 100 points will be given.
2. See Appendix D for setup diagram for this exercise.
3. Cruise control cannot be used.

# EVENT 7 – LANE CHANGE



The driver must approach Lane A at not less than 45km/h and not exceeding 55km/h. As the driver approaches point B, a light at point C will indicate which lane the driver must use to exit at point D. The driver must manoeuvre left or right as indicated by the lights.

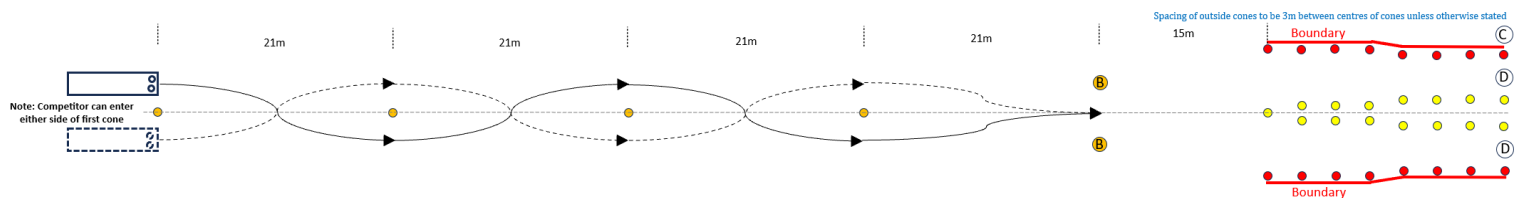
Penalties will be accumulated for:

- Speed less than 40km/h
- Speed less than 45km/h
- Striking a marker
- Manoeuvres into the wrong lane
- Moving outside the boundaries of the course
- Using cruise control

Note:

1. If the driver exceeds 55km/h, the official will call "abort" and a penalty of 100 points will be given.
2. See Appendixes E & F for setup diagrams for this exercise.
3. Cruise control cannot be used.

# EVENT 8 – WEAVING LANE CHANGE



The driver will approach cones at not less than 45km/h and not exceeding 55km/h and drive between cones. As the driver approaches point B, a light at point C will indicate which lane the driver must use to exit at point D. The driver must manoeuvre left or right as indicated by the lights.

The measurements for the Approach B as well as Centre and Boundary Cones for Lanes D are the same for Events 8 & 9 as are shown in Event 7.

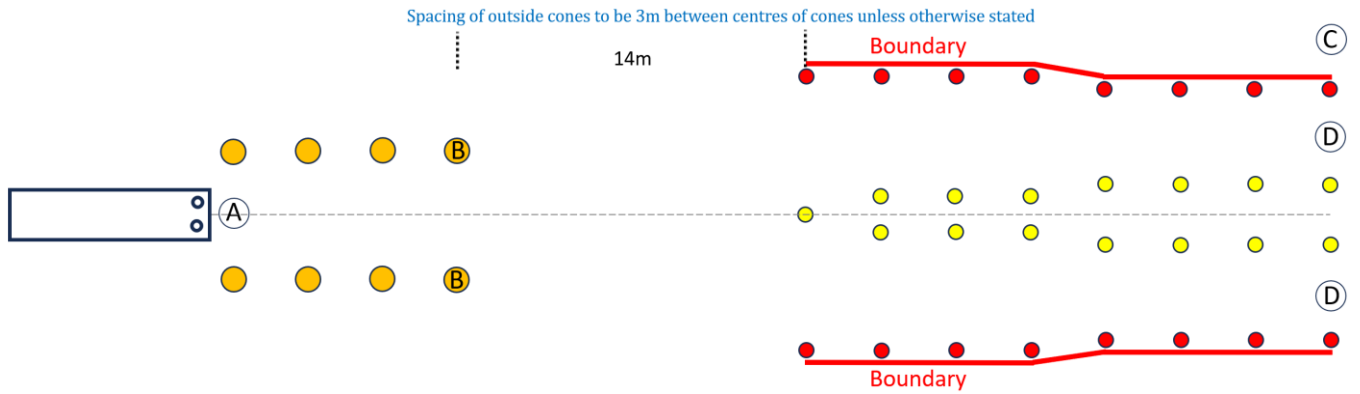
Penalties will be accumulated for:

- Speed less than 40km/h
- Speed less than 45km/h
- Striking a marker
- Manoeuvres into the wrong lane
- Moving outside the boundaries of the course
- Using cruise control

Note:

4. If the driver exceeds 55km/h, the official will call "abort" and a penalty of 100 points will be given.
5. See Appendixes E & F for setup diagrams for this exercise.
6. Cruise control cannot be used.

# EVENT 9 – LANE CHANGE



The driver must approach Lane A at not less than 45km/h and not exceeding 55km/h. As the driver approaches point B, a light at point C will indicate which lane the driver must use to exit at point D. The driver must manoeuvre left or right as indicated by the lights.

The measurements for the Approach B as well as Centre and Boundary Cones for Lanes D are the same for Events 8 & 9 as are shown in Event 7.

~~Penalties will be accumulated for:~~

- ~~• Speed less than 40km/h~~
- ~~• Speed less than 45km/h~~
- ~~• Striking a marker~~
- ~~• Manoeuvres into the wrong lane~~
- ~~• Moving outside the boundaries of the course~~
- ~~• Using cruise control~~

~~Note:~~

- ~~7. If the driver exceeds 55km/h, the official will call "abort" and a penalty of 100 points will be given.~~
- ~~8. See Appendixes E & F for setup diagrams for this exercise.~~
- ~~9. Cruise control cannot be used.~~



## EVENT 10 – BRAKING

---

Once the appliance reaches 45km/h, a light on the appliance dash will come on to indicate the competitor is up to speed.

Sometime following this and within the defined braking area clearly identified on the track, the judge will activate the indicator light and sounder (which will also activate the braking calculator device) and the competitor will stop in the shortest distance he/she can.

The reaction time and total stopping distance will be calculated. The calculated time and distance will be multiplied by ten and used as penalties for this exercise.

In the event of a competitor braking and / or slowing to below 45km/h before the indicator light / sounder is activated, this will result in an immediate penalty of 100. This is then added to the reaction time and stopping distance.

Penalties will be accumulated for:

- Left foot braking
- Using cruise control

Orange Road Cones will be placed on both ends of the event in the middle of the track which will indicate the boundary of the event, to ensure no one enters this area for safety reasons.

# THEORY TEST (SCORESHEET)

- Official to complete

yellow shaded areas only.

COMPETITOR NUMBER: \_\_\_\_\_

TEST SHEET NUMBER: \_\_\_\_\_

1	A	B	C	D
2	A	B	C	D
3	A	B	C	D
4	A	B	C	D
5	A	B	C	D
6	A	B	C	D
7	A	B	C	D
8	A	B	C	D
9	A	B	C	D
10	A	B	C	D
11	A	B	C	D
12	A	B	C	D
13	A	B	C	D
14	A	B	C	D
15	A	B	C	D
16	A	B	C	D
17	A	B	C	D
18	A	B	C	D
19	A	B	C	D
20	A	B	C	D
21	A	B	C	D
22	A	B	C	D
23	A	B	C	D
24	A	B	C	D
25	A	B	C	D

**Clearly mark the letter of the answer you think is correct with an 'X'**

**A penalty of 10 is given for each incorrect answer**

Fault	Count	Penalty
Incorrect Answers		10 each

Total Score \_\_\_\_\_

As Calculated by Scoring System

# EVENT 1 – SHRINKING SERPENTINE (SCORESHEET)

- Official to complete yellow shaded areas only.

COMPETITOR NUMBER:                     

Fault	Count	Penalty
Tyre touching the no pass line		75 each
Striking a <del>Marker</del> Cone		50 each
Realignment		25 each
Incorrect Run Attempt (Penalty 19)		300 original breach, 100 per additional breach
<b>Reason(s) for Penalty 19</b>		

Appliance Parked Duration                     

Time Event Completed                     

Officials Initials                     

Competitors Initials                     

Total Score                       
As Calculated by Scoring System

## EVENT 2 – ESTIMATING CLEARANCES (READY RECKONER)

Ready Reckoner to Calculate Initial Width Penalty  
If distance is greater than overall width of appliance

<b>RR2A</b>	<b>Clearance each side</b>	<b>Penalty</b>
	0 – 150mm	0
	151 – 175mm	10
	176 – 200mm	20
	201 – 225mm	30
	226 – 250mm	40
	251 – 275mm	50
	276 – 300mm	60
	301 – 325mm	70
	326 – 350mm	80
	351 – 375mm	90
	376mm or more	100
	Marker Strike	100

Ready Reckoner to Calculate Initial Width Penalty  
If distance is less than overall width of appliance

<b>RR2B</b>	<b>Clearance</b>	<b>Penalty</b>
	0 to -25mm	100
	-26 to -50mm	120
	-51 to -75mm	140
	-76 to -100mm	160
	-101mm or more	180

Ready Reckoner to Calculate Second Near Side Penalty  
Second penalty if distance is less than overall width of appliance

<b>RR2C</b>	<b>Clearance</b>	<b>Penalty</b>
	0 – 75mm	0
	76 – 100mm	10
	101 – 125mm	20
	126 – 150mm	30
	151 – 175mm	40
	176 – 200mm	50
	201mm or more	60
	Marker Strike	100

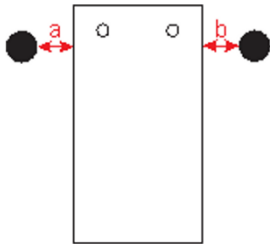
# EVENT 2 – ESTIMATING CLEARANCES (SCORESHEET – PART A)

Official to complete **yellow shaded areas only**. **COMPETITOR NUMBER:**

## (If clearance distance is greater than overall width of appliance)

Appliance Width

Marker Width



Have driver position between the markers

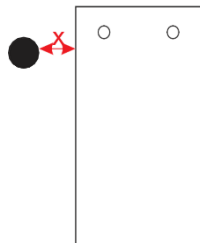
	Hit marker? (✓)	Measure	
a	100		RR2A
b	100		RR2A

## (If clearance distance is less than overall width of appliance)

Appliance Width

Marker Width  RR2B

Remove drivers side marker and have driver position on near side marker only



	Hit marker? (✓)	Measure	
X	100		RR2C

Fault	Count	Penalty
Incorrect Run Attempt (Penalty 19)		300 original breach, 100 per additional breach
Reason(s) for Penalty 19		

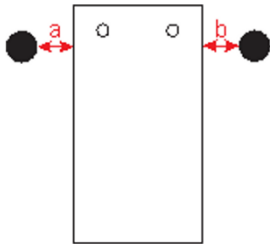
# EVENT 2 – ESTIMATING CLEARANCES **(SCORESHEET – PART B)**

Official to complete **yellow shaded areas only**. **COMPETITOR NUMBER:**

## (If clearance distance is greater than overall width of appliance)

Appliance Width

Marker Width



Have driver position between the markers

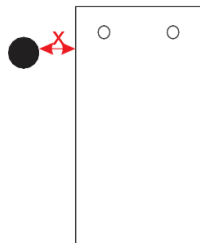
	Hit marker? (✓)	Measure	
a	100		RR2A
b	100		RR2A

## (If clearance distance is less than overall width of appliance)

Appliance Width

Marker Width  RR2B

Remove drivers side marker and have driver position on near side marker only



	Hit marker? (✓)	Measure	
X	100		RR2C

Fault	Count	Penalty
Incorrect Run Attempt (Penalty 19)		300 original breach, 100 per additional breach
Reason(s) for Penalty 19		

Time Event Completed

Officials Initials

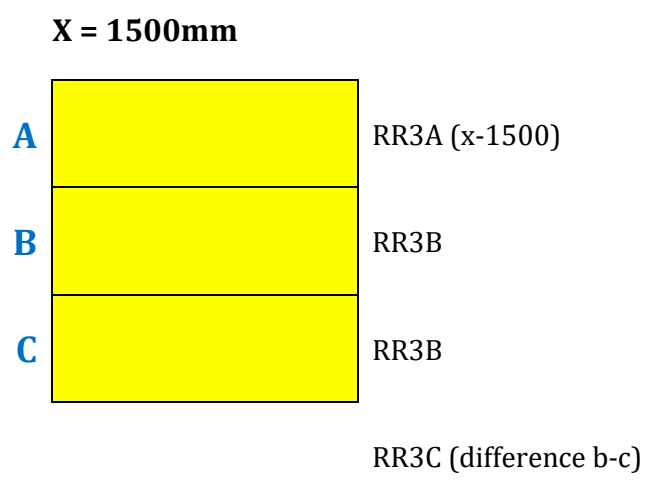
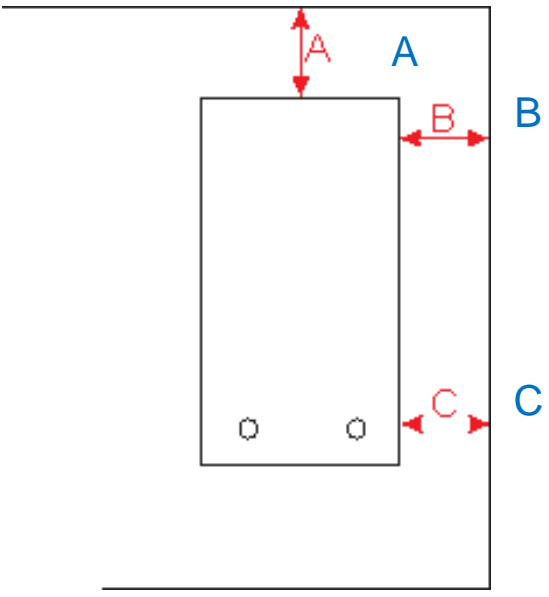
Competitors Initials \_\_\_\_\_

Total Score \_\_\_\_\_  
As Calculated by Scoring System

# EVENT 3 – PARALLEL PARKING (SCORESHEET)

Official to complete **yellow shaded areas only**. **COMPETITOR NUMBER:**

Fault	Count	Penalty
Tyre touching the kerb		100 each
Tyre touching the no pass line		75 each
<b>RECORD ENTRY MOVEMENT TOTAL IN COUNT COLUMN</b> - PENALTIES APPLY FOR MORE THAN FOUR	<i>Total movements*</i>	25 each
<b>RECORD EXIT MOVEMENT TOTAL IN COUNT COLUMN</b> - PENALTIES APPLY FOR MORE THAN FOUR	<i>Total movements*</i>	25 each
<b>Incorrect Run Attempt (Penalty 19)</b>		300 original breach, 100 per additional breach
<b>Reason(s) for Penalty 19</b>		



Appliance Parked Duration

Time Event Completed

Officials Initials

Competitors Initials \_\_\_\_\_

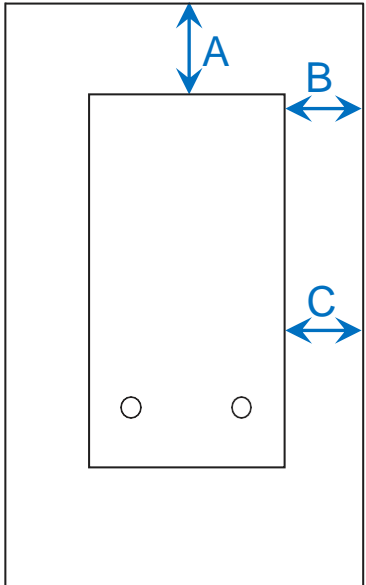
Total Score \_\_\_\_\_  
As Calculated by Scoring System

# EVENT 4 – BAY PARKING (SCORESHEET)

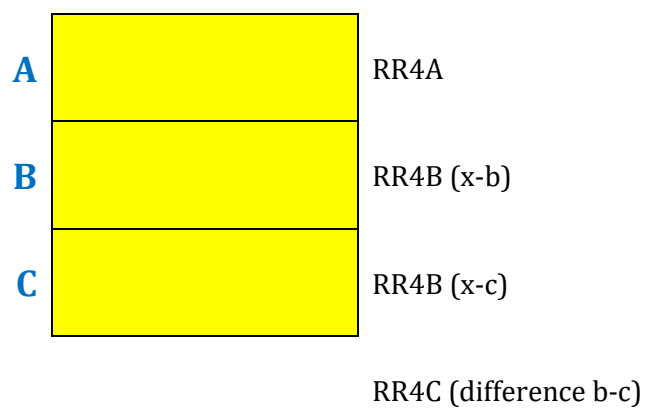
Official to complete **yellow shaded areas only**.

COMPETITOR NUMBER:

Fault	Count	Penalty
Tyre touching the kerb		100 each
Striking a cone		50 each
Not <b>positioning appliance fully</b> inside the cone bay area on entry and exit of parking bay		100 each
Each Realignment		25 each
<b>Incorrect Run Attempt (Penalty 19)</b>		300 original breach, 100 per additional breach
<b>Reason(s) for Penalty 19</b>		



X = 300mm



Appliance Parked Duration

Time Event Completed

Officials Initials

Competitors Initials \_\_\_\_\_

Total Score \_\_\_\_\_  
As Calculated by Scoring System



# EVENT 5 – STRAIGHT LINE DRIVING (SCORESHEET)

- Official to complete **yellow shaded areas only**.

COMPETITOR NUMBER:

Cats Eye Strikes					
	1st	2nd	3rd	4th	Penalty
Front Wheels					10 <del>5</del> / Strike
Rear Wheels					10 <del>5</del> / Strike
Parking Bay Strikes					
	Leaving	Entry	Leaving	Entry	Penalty
Cones					50 <del>25</del> / Strike
Mid Area			Finish Area		
Not <b>fully</b> in Parking Bay					<del>20</del> 100 / Each Bay
Fault				Count	Penalty
Stopping and continuing in the same direction					25 <del>15</del> each
Realign					25 <del>30</del> each
Crossing cats eye line with front wheels					75 each
Incorrect Run Attempt (Penalty 19)					300 original breach, 100 per additional breach
<b>Reason(s) for Penalty 19</b>					

Appliance Parked Duration

Time Event Completed

Officials Initials

Competitors Initials \_\_\_\_\_

Total Score   
As Calculated by Scoring System

# EVENTS 6-9 - (SCORESHEET)

- Official to complete **yellow shaded areas only**.

**COMPETITOR NUMBER:**

## EXERCISE 6L - Shrinking Chicane

Fault	Count	Penalty
Speed Less Than 45km		100 each
Striking a <del>Marker</del> Cone		50 each
Incorrect Run Attempt (Penalty 19)		300 original breach, 100 per additional breach
<b>Reason(s) for Penalty 19</b>		

## EXERCISE 6R - Shrinking Chicane

Fault	Count	Penalty
Speed Less Than 45km		100 each
Striking a <del>Marker</del> Cone		50 each
Incorrect Run Attempt (Penalty 19)		300 original breach, 100 per additional breach
<b>Reason(s) for Penalty 19</b>		

## EXERCISE 7 - Lane Change

Fault	Count	Penalty
Speed Less Than 45km		100 each
Striking a <del>Marker</del> Cone		50 each
Incorrect Run Attempt (Penalty 19)		300 original breach, 100 per additional breach
<b>Reason(s) for Penalty 19</b>		

# EVENTS 6-9 - (SCORESHEET Continued)

## EXERCISE 8 - Weaving Lane Change

Fault	Count	Penalty
Speed Less Than 45km		100 each
Striking a <del>Marker</del> Cone		50 each
Incorrect Run Attempt (Penalty 19)		300 original breach, 100 per additional breach
<b>Reason(s) for Penalty 19</b>		

## EXERCISE 9 - Lane Change

Fault	Count	Penalty
Speed Less Than 45km		100 each
Striking a <del>Marker</del> Cone		50 each
Incorrect Run Attempt (Penalty 19)		300 original breach, 100 per additional breach
<b>Reason(s) for Penalty 19</b>		

Time Event Completed                     

Officials Initials                             

Competitors Initials                             

Total Score                               
As Calculated by Scoring System

# EVENT 10 – BRAKING (SCORESHEET)

- Official to complete **yellow shaded areas only**.

**COMPETITOR NUMBER:**

Fault	Count	Measure / Penalty
Speed at brake km/h		km/h
Stopping distance in metres		metres
Reaction time in metres		metres
<b>Subtotal of above measurements are multiplied x 10</b>		
Speed Less Than 45km before brake indicator light activates		100 each
<b>Incorrect Run Attempt (Penalty 19)</b>		<b>300 original breach, 100 per additional breach</b>
<b>Reason(s) for Penalty 19</b>		

Time Event Completed

Officials Initials

Competitors Initials \_\_\_\_\_

**Total Score** \_\_\_\_\_  
As Calculated by Scoring System

# APPENDIX A – EVENT 5 – SETUP SHEET

