



GENERAL CONDITIONS, REQUIREMENTS & SPECIFICATIONS for Drivers Challenges

~~April 2025~~ **May Updated May 2026**

(Changes from 2025 denoted in red)

Improvements made in May 2026 are highlighted in **Yellow**

INDEX

ENTRY REQUIREMENTS	3
EQUIPMENT	4
GENERAL CONDITIONS	5
OFFICIALS	6
TABLE OF PENALTIES	7
EXERCISE No 1: SHRINKING SERPENTINE COURSE	8
EXERCISE No 2: ESTIMATING CLEARANCE	9
EXERCISE No 3: PARALLEL PARKING	10
EXERCISE No 4: BAY PARKING	11
EXERCISE No 5: STRAIGHT LINE DRIVING	12
EXERCISE No 6L& 6R: SHRINKING CHICANE	13
EXERCISE No 7: LANE CHANGE	14
EXERCISE No 8: WEAVING LANE CHANGE	14
EXERCISE No 9: LANE CHANGE	14
EXERCISE No 10: BRAKING	15
SCORE SHEET: THEORY TEST	16
SCORE SHEET: EXERCISE 1	17
SCORE SHEET: EXERCISE 2	18
SCORE SHEET: EXERCISE 3	19
SCORE SHEET: EXERCISE 4	20
SCORE SHEET: EXERCISE 5	21
SCORE SHEET: EXERCISE 6L, 6R, 7	22
SCORE SHEET: EXERCISE 7, 8, 9	23
SCORE SHEET: EXERCISE 10	24
APPENDIX A: EXERCISE 5 SETUP SHEET.....	29
APPENDIX 1: APPLIANCE MEASUREMENTS.....	25

ENTRY REQUIREMENTS

DRIVERS

- ALL competitors are to be present for a Drivers Briefing prior to the commencement of the Challenge.
- ALL competitors must have a full class 2 licence.
- The UFBA Challenge Panel shall reserve the right to add “wild card” entries to make up the numbers if required.
- The UFBA Challenge Panel shall also have the right to restrict entries should this prove necessary.

UNIFORM

- All participants shall wear Fire and Emergency NZ (FENZ) level 1 uniform (except for helmets and gloves) or FENZ dark blues.
- Participants from Rural and Industrial Brigades shall wear their level 1 uniform or recognised equivalent.

THE CHALLENGE

The Driving Challenge shall consist of:

1. A set of multi choice questions taken from the ~~Heavy Traffic Class 2 Road Code~~ Heavy Vehicle Licence, the ~~New Zealand Fire Service drivers manual, basic pump operation, ECO control,~~ Driving at Fire and Emergency policy, ~~Entry Control Procedures from the Respiratory Protection Equipment – Reference Guide~~, and general Road Code.
2. Driving skills as contained in these rules.
3. Categories:
 - a) Individual competitor.
 - b) Rookie Category (applicable only to the National Challenge): the winner of the Rookie Category will be the best placed competitor that is competing at the National Drivers Challenge for the first time.
 - c) Team Aggregate Category: the top three placing team members, whose aggregate overall penalties are used to determine Team Aggregate placings.
 - I. The make-up of a Team Aggregate must compromise of members from within one brigade.
 - II. Team numbers will consist of a minimum of three and a maximum of five competitors.

EQUIPMENT

1. Required amount of fire appliances (one spare recommended)
2. Sufficient Score Sheets and Clipboards
3. Competitor Identification Numbers
4. Suitable Area for Field Secretary with power
5. Ezy-Up shelters or similar for Isolation Areas (14 recommended)
6. Sheltered Catering Area
7. Sufficient Portable Radios: one per event and one controller
8. Sufficient Hi Viz Vests: one available per official
9. Sufficient Tape Measures
10. 2 x Heavy String Lines
11. Chalk, Crayon & Duct Tape
12. ~~Electrical~~ tape for marking appliances
13. Sufficient cones as itemised below:
 - Exercise 1: 6 x Orange Tall/Skinny Cones & 4 x Red Small Cones
 - Exercise 2: 4 x 1.5mtr Marker Poles (2 x Different Colours)
 - Exercise 3: 4 x Red Small Cones
 - Exercise 4: 2 x Orange Road Cones & 5 x Yellow Small Cones
 - Exercise 5: ~~12~~ 10 x Orange Road Cones
 - Exercise 6L: 2 x Orange Road Cones, 15 x Red Small Cones & 16 x Yellow Small Cones
 - Exercise 6R: 2 x Orange Road Cones, 15 x Red Small Cones & 16 x Yellow Small Cones
 - Exercise 7: 9 x Orange Road Cones, 6 Orange Small Cones, 16 x Red Small Cones & 15 x Yellow Small Cones
 - Exercise 8: 3 x Orange Road Cones, 4 x Orange Small Cones, 16 x Red Small Cones & 15 x Yellow Small Cones
 - Exercise 9: 9 x Orange Road Cones, 6 Orange Small Cones, 16 x Red Small Cones & 15 x Yellow Small Cones
 - Exercise 10: 4 x Orange Road Cones.
14. Sufficient lengths of hose or similar (~~200~~ 2 x 8's for Boundary & 2 x 80's for ~~Kerb~~ No Pass Line in Exercise 1, ~~50~~ 1 x 12 for Kerb and 1 x 25 for No Pass Line in Exercise 3, ~~34~~ 1 x 31 for Kerb & 2 x 10's for the vertical plane in Exercise 4), 4 x 10's & 2 x 3's for Kerb in Exercise 5. Minimum of 310 metres.
15. ~~50-60 metres of 100x50mm timber side markers and~~ Timber for L frames to hold end barricades (6 required) for Exercise 3 and 4
16. Ply (or similar e.g., Pallets) for rear wall in Exercise 4 – 1 @ 3000mm x 1200mm
17. Ply (or similar e.g., Pallets) for front and rear wall in Exercise 3 – 1 @ 3000mm x 1200mm and 1 @ 2600mm x 1200mm
18. 2 x Upright front corner indicator poles for Exercise 4 spring poles
19. 2 x Magnetic Strip or Measuring Aids (T-Squares) for Exercises 3 and 4
20. Cat's eyes for Exercise 5 (~~36~~ 20 white and ~~6-yellow~~ 12 different colour)
21. 1 x Stopwatches for each setup of Exercises 1,2,3,4 and 5
22. 1 x GPS Units that indicates speed for Exercises 6, 7, 8, 9 per appliance used
23. 3 sets of lights for Exercises 7-9 and appropriate extension leads. Generators if power not readily available
24. Brake meter and associated equipment for Exercise 10

Note: Equipment for Exercises 1-5 will need to be doubled for operating 2 scenarios of each event at once.

GENERAL CONDITIONS

- 1) Any competitor found interfering with or altering their score sheet will be disqualified.
- 2) The compulsory theory test component can be completed before, during, or after the challenge and will count towards the final score.
- 3) The JUDICIAL COMMITTEE shall comprise of the following:
 - Challenge Panel Leader **or their nominated deputy** (Will act as the Chair).
 - Two other members of the Challenge Panel.
 - One member nominated by the UFBA Management.Note – All of the above must be available for the duration of the event
- 4) Any protest must be lodged within twenty (20) minutes after completion of that evolution as recorded on the scoresheet. Such protest must be lodged on the appropriate form which shall be available from the Field Secretary and must be accompanied by a fee of \$100 cash. Intent to protest, must be notified to the Referee of that location within those 20 minutes.
- 5) The Judicial Committee's decision shall be final.
- 6) Prior to the commencement of Events **1-5-2, 3 & 4**, the appliances will be available for inspection with their Event Number/s indicated on the dash/windscreen, **showing the pre-determined measuring points marked as such with tape. Kerb distance and parallel offset measuring points to be 1) immediately behind cab on locker body work, 2) immediately behind rear wheel, with the directional measurements as 3) forward most part of body (bumper or siren) and 4) most backwards part of the body or equipment (excluding ladder).** At no other times during the event will the competitors be able to inspect the appliances or event conditions. **This may be displayed to the competitors by ways of digital presentation at the competitors briefing including the measurements.**
- 7) **There will be a safety and information** briefing prior the commencement of the challenge **if required**.
- 8) All diagrams and measurements within the current rules are a guideline and are subject to the final decision on the day by the judges and Judicial Committee to ensure that the challenge is feasible and safe for all involved.
- 9) At the conclusion of each evolution, Officials must initial, enter the time the competitor completed the exercise, then complete the score sheet – this will then be initialled by the competitor.
- 10) All competitors will be allocated their respective muster/isolation point/s at each evolution by the judge in charge of that evolution. Competitors are strictly required to remain in this area until being released by the judge.
- 11) The Challenge Panel Leader or their nominated representative has the right to restrict speeds and/or lengthen dimensions of exercises, due to adverse conditions and/or safety reasons.
- 12) Speed penalties for each exercise are **measured assessed** inside that particular exercise from the start point to the end point.
- 13) Competitors will be made to stop the moment they touch a cone (**exception of incurring Penalty 3 for a cone**), **estimating stand, front** marker, kerb, barricade, or crossing the vertical plane (indicating a side barrier) on the course and forced to realign **for Events 1-5 resulting in Penalty 19 being applied. and two realigning Penalty 2 will be applied for each additional directional movement. Obstacles will be replaced to original position before continuing.**
- 14) The use of cruise control or electronic speed limiting in any exercise is not permitted and will incur **a** Penalty 19 per infraction. **This includes the use of any performance or gear selector modes.** Events 6-10 are to be completed using D – Drive (if using an automatic transmission).
- 15) In the event of a tie in events 6-9, the results from event 10 will be used to determine the result for the final placings.
- 16) Taillights will be taped up by the Challenge Panel for events 3 & 4.
- ~~17) Side walls to consist of 100x50mm lengths lying flat on the ground. Front corners to be marked with polystyrene pipe or similar. Back wall and Barricades to consist of a physical wall of a different colour to that of the ground.~~
- 18) A tall cone will be placed on the driver's side of the road **200** 100m prior the start of each of events 6-9. As the appliance passes this cone, the GPS reading will be called out. The driver if they wish, may ask once more prior this cone on each event to confirm their speed adjustment by the use of the word "Speed".
- 19) Starting points for both Drivers Side Tyres will be marked **with tape** on the ground for Events 1, 2, 3 & 4. Competitors will be guided **returning the appliance** to these marks by the official once they have completed their scoring evolution of the event.
- 20) Any Tyre fully outside the No Pass Line in Events 1 & 3, will be deemed as going outside the boundary.
- 21) The Appliances will stay running with the door open between each competitor unless instructed by the Officials.
- 22) Competitors will have 1min from the time they approach the appliance to adjust anything they need prior commencement of the Event. If finished earlier, they are to indicate to the official by way of a thumbs up. The official will call "Event Started" as the Event Commences.
- 23) Where an Event refers to a continuous uninterrupted motion (Events 1, 3, 4 & 5), this is be without break or rest. Any realignments or complete stops will be recorded as Penalty 2 per infringement.
- 24) Measurements taken for Exercises 2, 3 & 4 will be recorded per millimetre.

OFFICIALS

Examiner / Marker for written questionnaire	1
Field Secretary	2
Exercise 1	2
Exercise 2	2 3
Exercise 3	3
Exercise 4	2
Exercise 5	2
Exercises 1-5 – Skill Events Referees	2
Exercise 6L	2
Exercise 6R	2
Exercise 7	2
Exercise 8	2
Exercise 9	2
Exercises 6-9 – Track Events Controller	1 (Will act as Safety Officer for these Events)
Exercises 6-9 – Track Events Comm's	1
Exercises 6-9 – Appliance Judge per Appliance	1
Exercises 6-9 – GPS Judge Caller per Appliance	1
Course / Comms Coordinator	2
Exercise 10 - Appliance Judge	1 (Will act as Safety Officer for this Event)
Relief Judges	2
Equipment Officer	1
Local Helpers (as Isolation Marshalls)	1 per group of competitors

Once appointed to an exercise, judges will remain in that position until the completion of the Challenge. Officials shall:

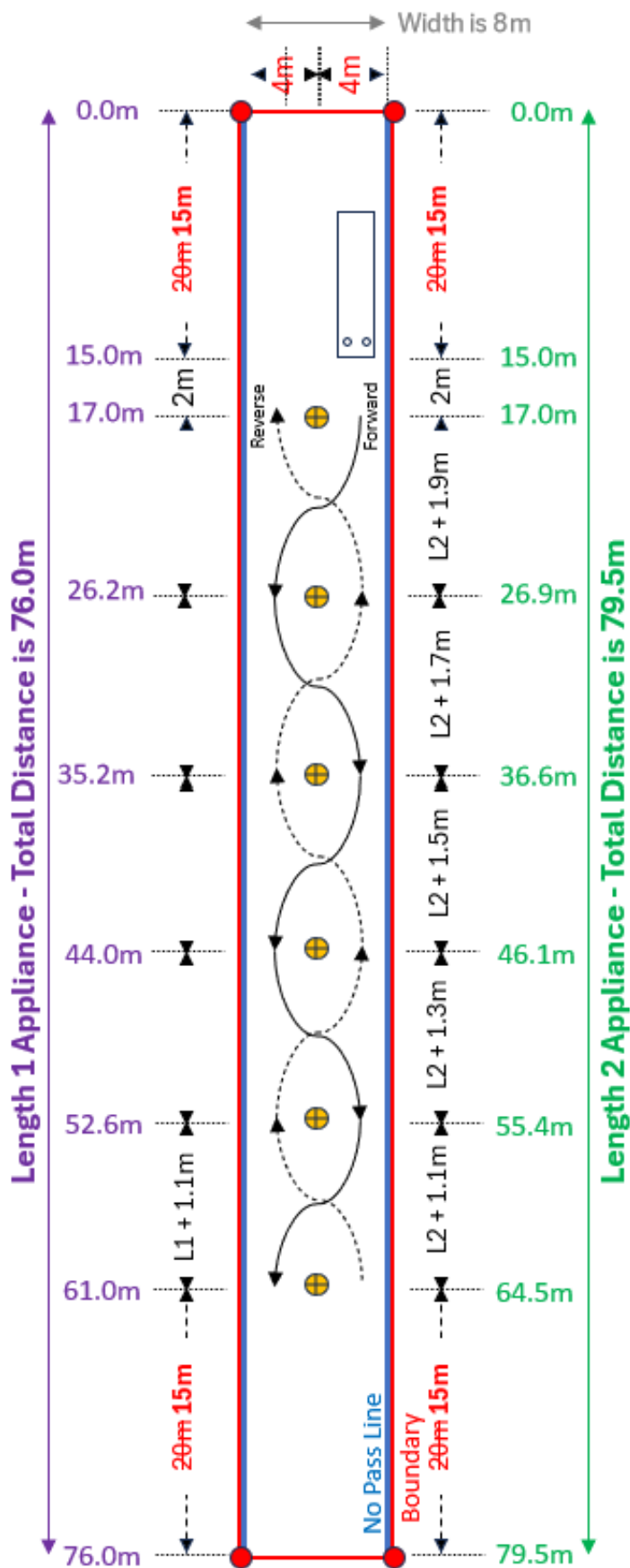
- Ensure they fully understand the exercise rules, penalties, penalty sheets and set-up for which they are officiating.
- Meet with the Challenge Panel at a directed time and location prior to the Challenge commencement.
- Attend the Officials Briefing.

TABLE OF PENALTIES

N.B. ~~Any~~ The appropriate penalty(s) that can be applied ~~to any event by the Officials if required~~ are listed below.

No#	Description	Penalties per Breach
1	In the case of any competitor using disrespectful language or abuse	Disqualification from that Event
2	Realignment (directional change) or a Complete Stop in Events 1, 3, 4 & 5 per infringement	25 5
3	Striking a cone	50 5
4	Touching no Pass Line	75 7.5
5	Touching a Kerb	100 10
6	Failure to fully enter a Cone Area or Cone Bays in Events 4 & 5	100 10
7	White Entrance/Exit Coloured Cats' Eyes (Event 5)	10 2.5
8	Coloured Middle Coloured Cats' Eyes (Event 5)	10 1
9	Speed between 35-40km/h or 50-55km/h in Events 6L,6R,7,8,9,10	100 10
10	Not Wearing a Seatbelt	Penalty 19 per event
11	Head outside of Window	Penalty 19 per event
12	Exceeding the Allotted Time Limit as per the run description for Events 1 & 5	Penalty 19 per event
13	Any Tyres fully outside the outer shown boundary cones in Events 6L,6R,7,8,9	Penalty 19 per event breach
14	Striking an estimating stand , barricade, front marker or crossing the vertical plane indicating a wall	Penalty 19 per breach
15	Over Speed Abort (above 55km/h) or Under speed (Under 40 35km/h) in Events 6L,6R,7,8,9,10	Penalty 19 per event
16	Incorrect Lane Change in Events 7,8,9	Penalty 19 per event
17	Use of Cruise Control or Gear Selector (if using an Automatic Transmission) in Events 6L,6R,7,8,9,10	Penalty 19 per event
18	Breach of Isolation	Penalty 19 per event
19	Not completing any Event as per the intent, or attempting to gain an advantage	300 30 original breach, 100 10 per additional breach maxing at 500 50 points per Event
	Tyres fully outside the No Pass Line will be deemed as going outside the boundary in Events 1,3,	Penalty 19 per breach
	Failure to weave in Event 8	Penalty 19 per event

EVENT 1 – SHRINKING SERPENTINE (New Version)



The driver must negotiate the course in a continuous **uninterrupted** motion in each direction. The driver will proceed forward through the course starting on the left-hand side of the course and then reverse the appliance back through the course from the opposite side to which they exited.

Any cone displaced will be replaced in its original position before the next pass is attempted. Any time that a competitor contacts a cone, then they will be forced to realign.

The front of the appliance is to be in line with the first cone and the driver's edge of the appliance to be positioned (750mm from the centre line) on the starting mark, which is 2m from the first cone.

This exercise has a time limit of 3:45 minutes to complete. Non completion of the exercise will result in an infringement of penalty 19 per sector not completed.

EVENT 2 – ESTIMATING CLEARANCES

The lead official will stand outside the driver's window to relay driver's instructions. Two different coloured estimating stands will be placed behind the appliance at the 28m mark, using the driver's side mark (1.25m off of centre) as the starting reference point. The officials will move the outside estimating stand as instructed to give the clearance width of the appliance within 1 minute. The officials will then measure the gap on the ground between the two estimating stands (RR2A) and record this as measurement A.

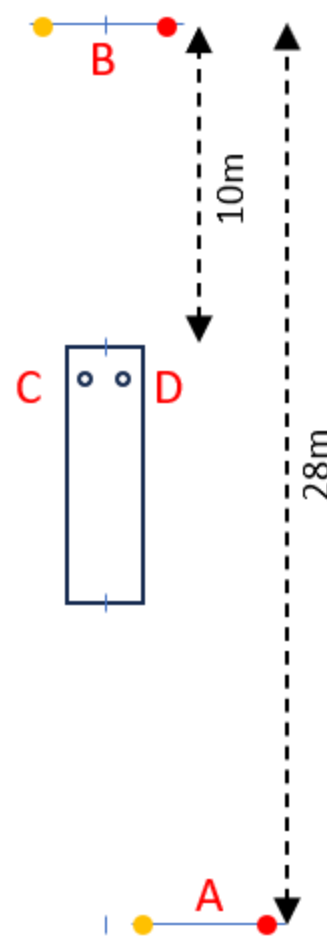
Whilst estimating clearances, as well as when moving the appliance, the driver has 1 minute to complete each evolution. Failure to do so will result in measurements being recorded where they stand at the expiry of that time. Any measurement less than the minimum needed or any estimation over 3,350mm 4,000mm, will also result in the penalty values of Penalty 19 applied per infringing measurement being recorded as No Contest (N/C). The width of the appliance will be fixed as being 2,500mm for both front and back measurements for this exercise.

Next the officials will place the two different coloured estimating stands 10mtrs in front of the appliance in line with the centre of the track on a mark (which is not visible to the driver).

Again, the officials will move the two stands to give the clearance width of the appliance. The officials will then measure the gap on the ground between the two estimating stands (RR2A) and record this as measurement B.

If the distance (B) is greater than 2,500mm, and less than 3,351mm, the competitor will then proceed with the appliance in a continuous uninterrupted motion up to the markers and stop within the confines of the markers centring the appliance. Once parked with the handbrake applied, the driver will indicate by way of a thumbs up to the lead official, when the stopwatch will be stopped. The intention is being centred using measurements C & D with a 50mm tolerance (RR2B). If this distance (B) is equal to or less than 2,500mm or greater than 3,350mm, the value of Penalty 19 will be applied for measurement B and will automatically apply for the measurements of C and D, as well as the difference of C/D and be recorded as No Contest (N/C) by the officials for measurements B, C & D.

RR2A A & B - Variance		RR2B C +/- D Variance	
=/< 2,500	30	0	0
2,501	0	50	0
2,800	0	51	5
2,801	2.5	100	5
2,850	2.5	101	10
2,851	5	150	10
2,900	5	151	15
2,901	7.5	200	15
2,950	7.5	201	20
2,951	10	250	20
3,000	10	251	25
3,001	12.5	300	25
3,050	12.5	301	30
3,051	15		
3,100	15		
3,101	17.5		
3,150	17.5		
3,151	20		
3,200	20		
3,201	22.5		
3,250	22.5		
3,251	25		
3,300	25		
3,301	27.5		
3,350	27.5		
3,351	30		



Part A: From the start position, the driver will manoeuvre his/her appliance to a point 10m from the markers and stop. Both markers will be placed by the official. The driver will then give instructions for the marker(s) to be moved to a position, which he/she estimates to be equivalent to the overall width of his/her vehicle plus 150mm maximum, per side.

When the competitor is satisfied with the clearance, the official will measure the distance between the two markers. If this distance is equal to or less than the overall width of the appliance (at the pre-determined measuring points), the run will be paused and penalties accumulated as per the ready reckoner. The driver's side marker will then be removed, and the competitor will proceed forward and position the appliance as close to the near side marker as he/she can (at the pre-determined measuring point). Any further penalties will then be accumulated.

Part B: Following the above, the driver will move forward until the rear of the appliance is level with the markers, he/she has just estimated. The official will then position one marker directly in line with the driver's side of the appliance at the pole adjustment line.

The driver will then indicate the position of the other marker (to be driver's side marker) using only his/her mirrors. When the driver is satisfied with the clearance, the official will measure the distance between the two markers. If this distance is equal to or less than the overall width of the appliance (at the pre-determined measuring points), the run will be paused and penalties accumulated as per the ready reckoner. The driver's side marker will then be removed, and the competitor will reverse and position the appliance as close to the near side marker as he/she can (at the pre-determined measuring point). Any further penalties will then be accumulated.

If the distance is greater than the overall width of the appliance (at the pre-determined marking points), the competitor will then reverse the appliance back to the markers and stop within the confines of the mark.

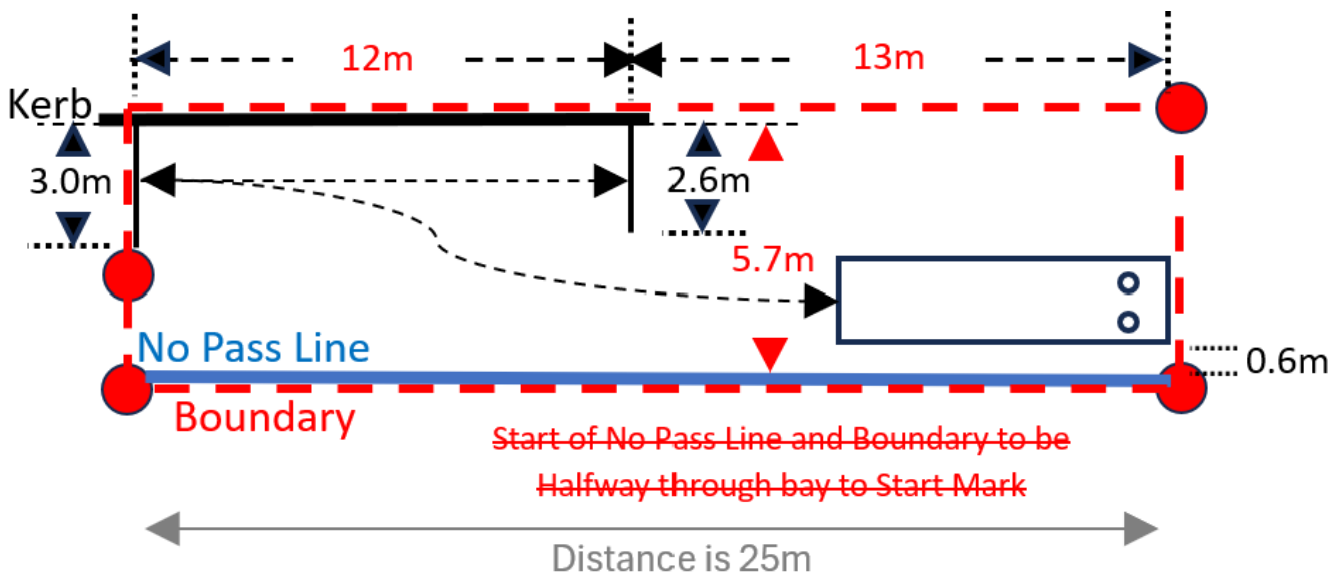
Penalties will be accumulated as per the Ready Reckoner and also for:

- Striking any side markers

Notes

1. Measuring point(s) will be pre-determined prior to challenge commencement and marked as such on the appliance with tape. Measuring points on an Iveco appliance will be the outside of the front indicators and the outside of the handle of the rear lockers.
2. Measurements will be taken on both sides (from the pre-determined measuring points to the markers) and penalties accumulated.
3. The driver's side window must be up.

EVENT 3 – PARALLEL PARKING



The driver will reverse the appliance from the start position into the parking area, as indicated by the barriers ~~with~~. The driver is permitted a maximum of two backward ~~movements~~ AND two forward movements to position the appliance in the parking area. ~~A change of direction signals the end of a movement. All movements are to be continuous uninterrupted movements.~~

Once parked ~~with the handbrake applied~~, the driver will indicate by way of a thumbs up to the lead official, ~~when the stopwatch will be stopped and~~ the appliance's position will be measured to calculate how far off centre within the front and rear confines the appliance is, as well as how far off the kerb and how parallel to the kerb the appliance is. Measurements will be taken from the ~~rear front rear~~ of the appliance at the pre-determined measuring points, and on the near side of the appliance near the front and rear at the pre-determined measuring points.

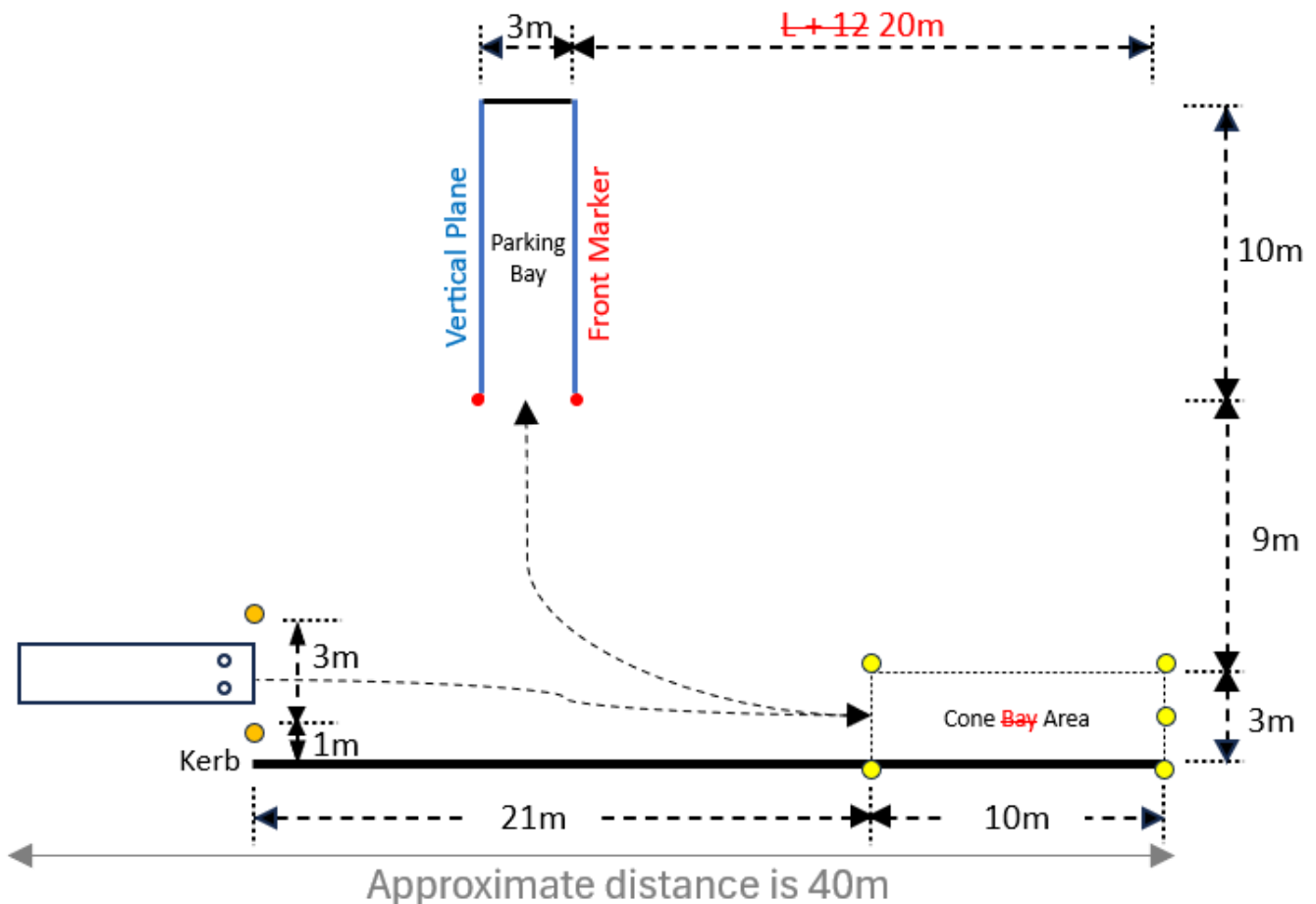
The appliance is intended to be stopped ~~within 100-300mm~~ 250-350mm off of the kerb with a maximum tolerance of ~~1mtr~~ 600mm (RR3B), as well as being parallel using measurements B&C with a 50mm tolerance (RR3C). It is to be ~~properly-centred~~ positioned 1,450-1,550mm from the ~~front rear~~ wall within the parking area using measurement A ~~with a tolerance of 50mm~~ (RR3A).

On leaving the parking area the driver is then permitted another maximum of two forward AND two backward movements to remove the appliance from the parking area and place the appliance back at the start position.

This exercise has a time limit of 3:2:45 minutes to park ~~inside the~~ Parking Bay. Once ~~3 minutes~~ this time has elapsed, the driver will be told to stop, ~~apply the~~ handbrake, and measurements ~~will be~~ taken. Failure to get all measuring points inside the parking bay will result in ~~penalty~~ 19 the maximum measurement ~~shown in yellow~~ being applied per missing measuring point.

RR3A		RR3B		RR3C	
A +/- 1,500mm	600mm	B & C +/- 300mm		B +/-	C Variance
0	0	0	0	0	0
50	0	50	0	50	0
51	2.5	51	5	51	5
100	2.5	100	5	100	5
101	5	101	10	101	10
150	5	150	10	150	10
151	7.5	151	15	151	15
200	7.5	200	15	200	15
201	10	201	20	201	20
250	10	250	20	250	20
251	12.5	251	25	251	25
300	12.5	300	25	300	25
301	15	301	30	301	30
350	15				
351	17.5				
400	17.5				
401	20				
450	20				
451	22.5				
500	22.5				
501	25				
550	25				
551	27.5				
600	27.5				
601	30				

EVENT 4 – BAY PARKING



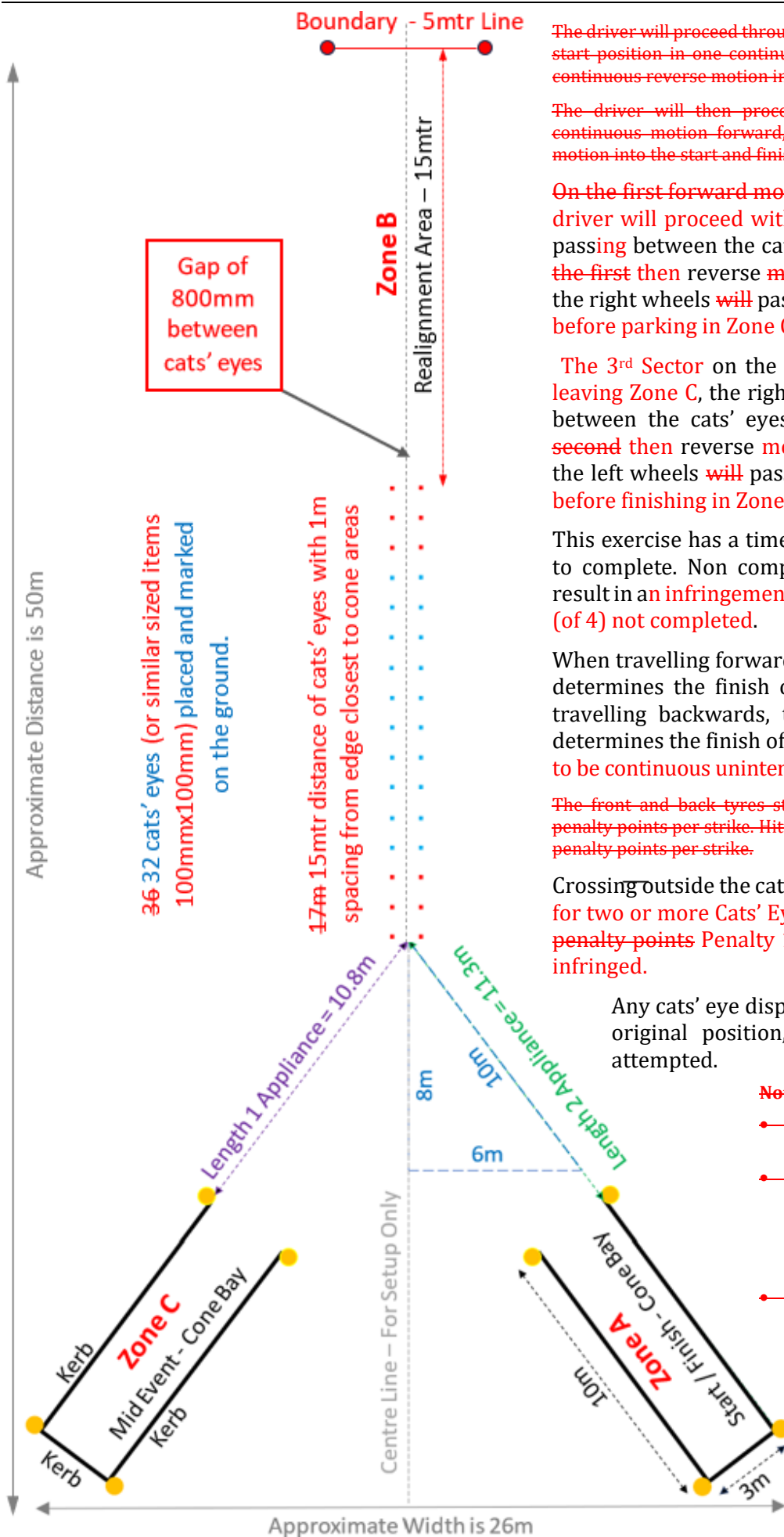
Driver starts between the cones at the start position, moves forward into Cone Bay Area until the rear of the appliance is inside the cones, then reverses into the parking bay without striking kerb, cones, front markers, side boundaries (as indicated by the vertical plane) or rear barricade. This includes the inside vertical plane from any ground marker. The driver will stop when they believe that they are in the correct position and apply the handbrake, the driver will indicate by way of a thumbs up to the lead official, when the stopwatch will be stopped and before measurements will be made. Once measurements are made, the driver will then drive forward out of the parking bay, into the Cone Bay Area until the rear of the appliance is past the cones, then reverse through the start cones. All movements will be continuous uninterrupted movements.

The appliance must be stopped within 100-300mm 550-650mm of the rear barricade (RR4A) and 250-350mm of the rear side vertical plane within the side boundary markers (RR4B). A variation of 50mm is permitted for centring the appliance being parallel (RR4C).

This exercise has a time limit of 3:2:45 minutes to park inside the Parking Bay. Once 3 minutes this time has elapsed, the driver will be told to stop, apply the handbrake, and measurements will be taken. Failure to get all measuring points inside the parking bay will result in penalty 19 the maximum measurement shown in yellow being applied per missing measuring point.

RR4A		RR4B		RR4C	
A +/- 300mm	600mm	B & C +/- 300mm		B +/- C Variance	
0	0	0	0	0	0
50	0	50	0	50	0
51	2.5	51	5	51	5
100	2.5	100	5	100	5
101	5	101	10	101	10
150	5	150	10	150	10
151	7.5	151	15	151	15
200	7.5	200	15	200	15
201	10	201	20	201	20
250	10	250	20	250	20
251	12.5	251	25	251	25
300	12.5	300	25	300	25
301	15	301	30	301	30
350	15				
351	17.5				
400	17.5				
401	20				
450	20				
451	22.5				
500	22.5				
501	25				
550	25				
551	27.5				
600	27.5				
601	30				

EVENT 5 – STRAIGHT LINE DRIVING



The driver will proceed through the course from the designated start position in one continuous motion forward, and in one continuous reverse motion into the mid event parking area.

The driver will then proceed through the course, in one continuous motion forward, and in one continuous reverse motion into the start and finish area.

On the first forward movement Leaving Zone A the driver will proceed with the left set of wheels will passing between the cat's eyes into Zone B, and on the first then reverse movement from Zone B, with the right wheels will passing between the cats' eyes before parking in Zone C.

The 3rd Sector on the second forward movement leaving Zone C, the right set of wheels will passing between the cats' eyes into Zone B, and on the second then reverse movement from Zone B, with the left wheels will passing between the cats' eyes before finishing in Zone A.

This exercise has a time limit of 4:30 3:45 minutes to complete. Non completion of the exercise will result in an infringement of Penalty 30 19 per sector (of 4) not completed.

When travelling forwards, the rear of the appliance determines the finish of a sector. Likewise when travelling backwards, the front of the appliance determines the finish of a sector. All movements are to be continuous uninterrupted movements

The front and back tyres striking cats eyes will result in 5 penalty points per strike. Hitting garage cones will result in 25 penalty points per strike.

Crossing outside the cat's eye line with front wheels for two or more Cats' Eye in a row, will result in 75 penalty points Penalty 19 being applied per sector infringed.

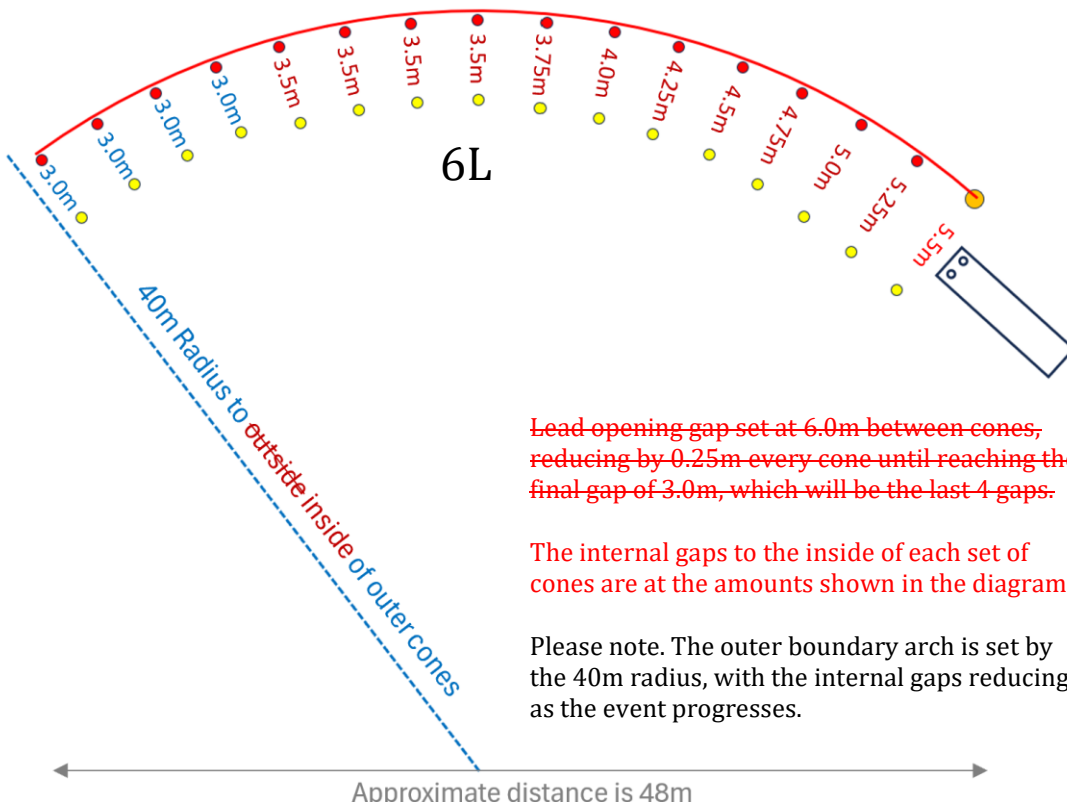
Any cats' eye displaced will be replaced in its original position, before the next pass is attempted.

Notes:

- See Appendix C for setup diagram for this exercise.
- Failure to fully complete any sector, as well as not fully entering a start/finish/mid area, will result in penalties for each sector and area combined.
- Hatched areas of the above diagram (Section C and Mid Event Area) are exempt from the Stop and Realignment penalties.

EVENT 6L & 6R – SHRINKING CHICANE

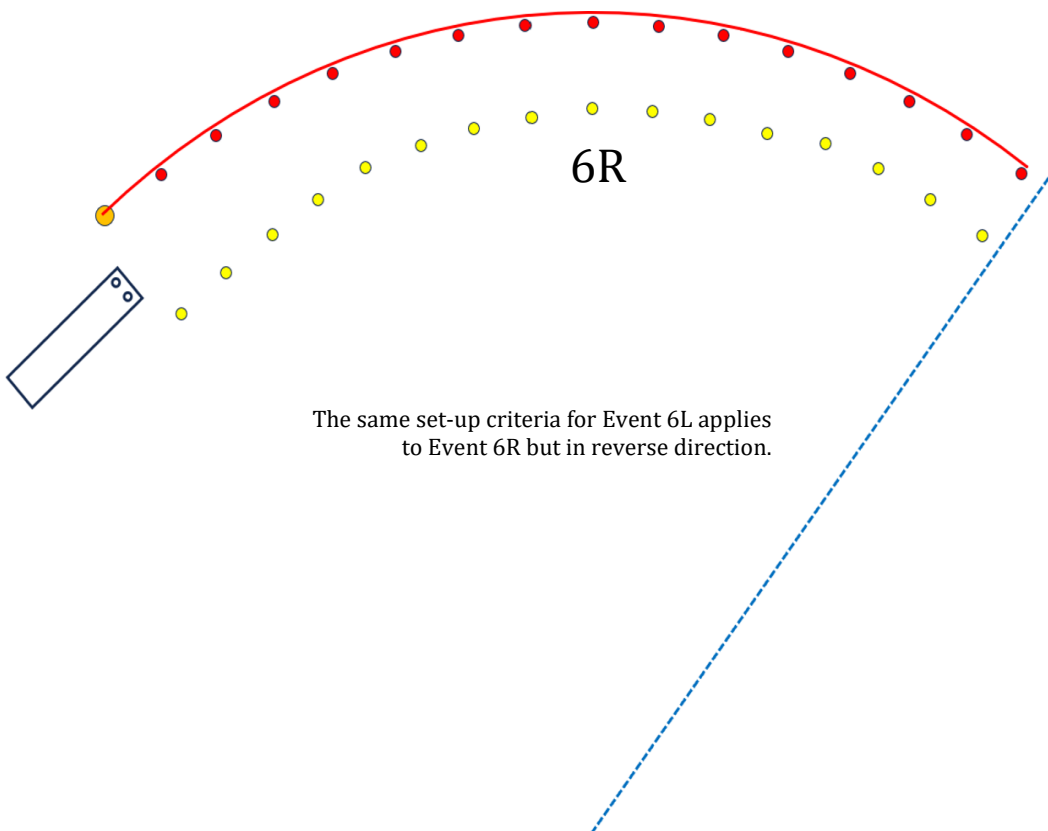
Spacing of outside cones to be 2.5m between centres



Lead opening gap set at 6.0m between cones, reducing by 0.25m every cone until reaching the final gap of 3.0m, which will be the last 4 gaps.

The internal gaps to the inside of each set of cones are at the amounts shown in the diagram.

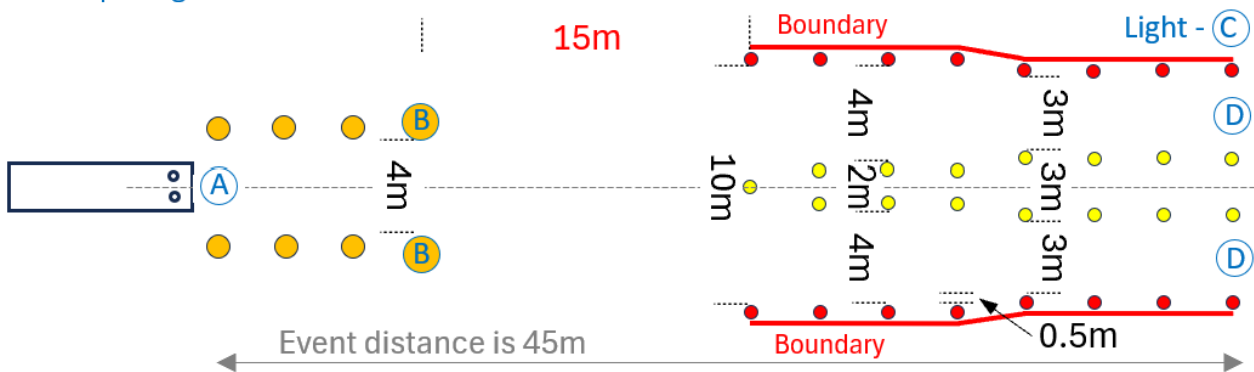
Please note. The outer boundary arch is set by the 40m radius, with the internal gaps reducing as the event progresses.



The driver must negotiate the chicane in a continuous motion at a speed not less than ~~45~~ 40km/h and not exceeding ~~55~~ 50km/h. The vehicle must keep within the boundaries throughout the entire manoeuvre. The top lead in cone will be a tall cone to indicate the high side of the approach chute.

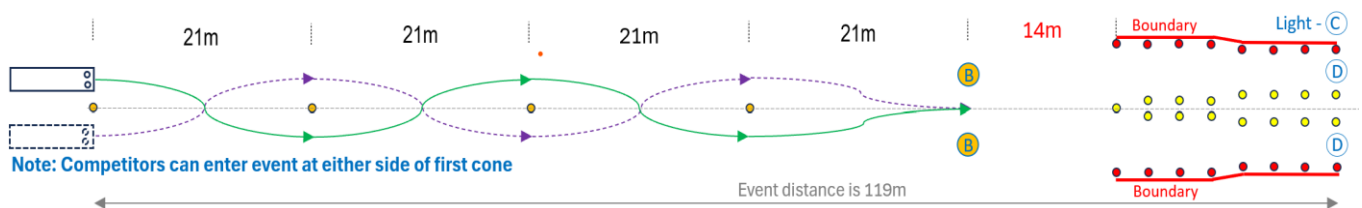
EVENT 7 – LANE CHANGE

Spacing of outside cones to be 3m between centres of cones unless otherwise stated



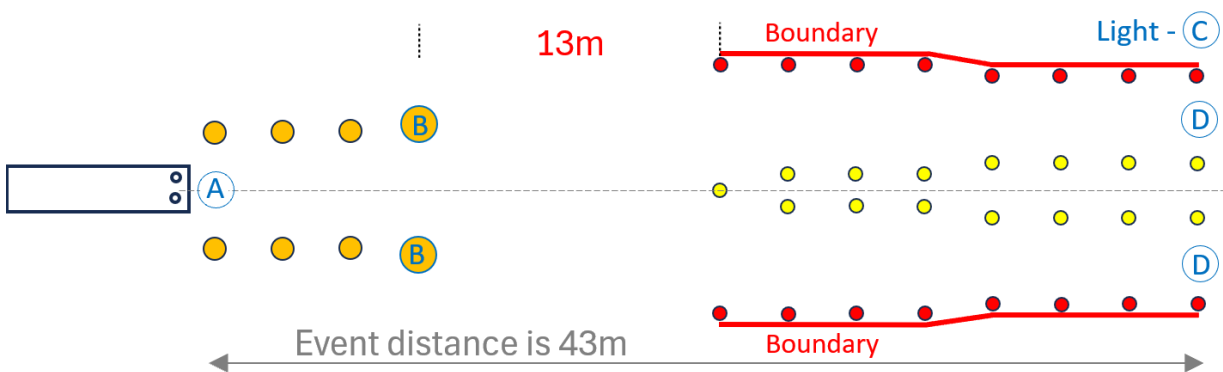
The driver must approach Lane A and maintain a speed at not less than 45 40km/h and not exceeding 55 50km/h throughout the event. As the driver approaches point B, a light at point C will indicate which lane the driver must use to exit at point D. The driver must manoeuvre left or right as indicated by the light.

EVENT 8 – WEAVING LANE CHANGE



The driver will approach cones and maintain a speed at not less than 45 40km /h and not exceeding 55 50km /h throughout the event and drive weave between cones. As the driver approaches point B, a light at point C will indicate which lane the driver must use to exit at point D. The driver must manoeuvre left or right as indicated by the light. This event has two evolutions. A-B & B-D. Penalty 19 can be applied to both evolutions.

EVENT 9 – LANE CHANGE



The driver must approach Lane A and maintain a speed at not less than 45 40km/h and not exceeding 55 50km/h throughout the event. As the driver approaches point B, a light at point C will indicate which lane the driver must use to exit at point D. The driver must manoeuvre left or right as indicated by the light.

Note: The setup measurements for the Approach B as well as Centre and Boundary Cones for Lanes D are the same for Events 8 & 9 as are shown in Event 7.

EVENT 10 – BRAKING

Once the appliance reaches 45km/h, ~~a light on the appliance dash will come on to~~ the official will call speed to indicate the competitor is up to speed.

Sometime following this and within the defined braking area clearly identified on the track, the judge will activate the indicator light and sounder (which will also activate the braking calculator device) and the competitor will stop in the shortest distance he/she can.

The reaction time and total stopping distance will be calculated. The calculated time and distance will be multiplied by ten and used as penalties for this exercise.

In the event of a competitor ~~activating the braking system and / or slowing to below 45km/h~~ prematurely before the indicator light / sounder is activated, this will result in ~~an immediate penalty of 100. This is then added to the reaction time and stopping distance~~ Penalty 19 being applied.

~~Penalties will be accumulated for:~~

- ~~• Left foot braking~~
- ~~• Using cruise control~~

Orange Road Cones will be placed on both ends of the event in the middle of the track which will indicate the boundary of the event, to ensure no one enters this area for safety reasons.

THEORY TEST (SCORESHEET)

1	A	B	C	D
2	A	B	C	D
3	A	B	C	D
4	A	B	C	D
5	A	B	C	D
6	A	B	C	D
7	A	B	C	D
8	A	B	C	D
9	A	B	C	D
10	A	B	C	D
11	A	B	C	D
12	A	B	C	D
13	A	B	C	D
14	A	B	C	D
15	A	B	C	D
16	A	B	C	D
17	A	B	C	D
18	A	B	C	D
19	A	B	C	D
20	A	B	C	D
21	A	B	C	D
22	A	B	C	D
23	A	B	C	D
24	A	B	C	D
25	A	B	C	D
26	A	B	C	D
27	A	B	C	D
28	A	B	C	D
29	A	B	C	D
30	A	B	C	D

COMPETITOR NUMBER:

TEST SHEET NUMBER:

**Clearly mark the
letter of the answer
you think is correct
with an 'X'**

**A penalty of ~~10~~ 5 is
given for each
incorrect answer**

Competitors Initials _____

Fault	Count	Penalty
Incorrect Answers		10 5 each

Total Score _____
As Calculated by Scoring System

EVENT 1 – SHRINKING SERPENTINE (SCORESHEET)

• Official to complete yellow shaded areas only

COMPETITOR NUMBER: _____

Fault	Count	Penalty
2 - Realignment (directional change) or a Complete Stop per infringement		25 5 each
3 - Striking a Cone		50 5 each
4 - Tyre touching the No Pass Line		75 7.5 each
Incorrect Run Attempt (Penalty 19)		300 30 original breach, 100 10 per additional breach
Circle the appropriate 10 11 12 13 18 19		

Appliance Parked Duration _____

Time Event Completed _____

Officials Initials _____

Competitors Initials _____

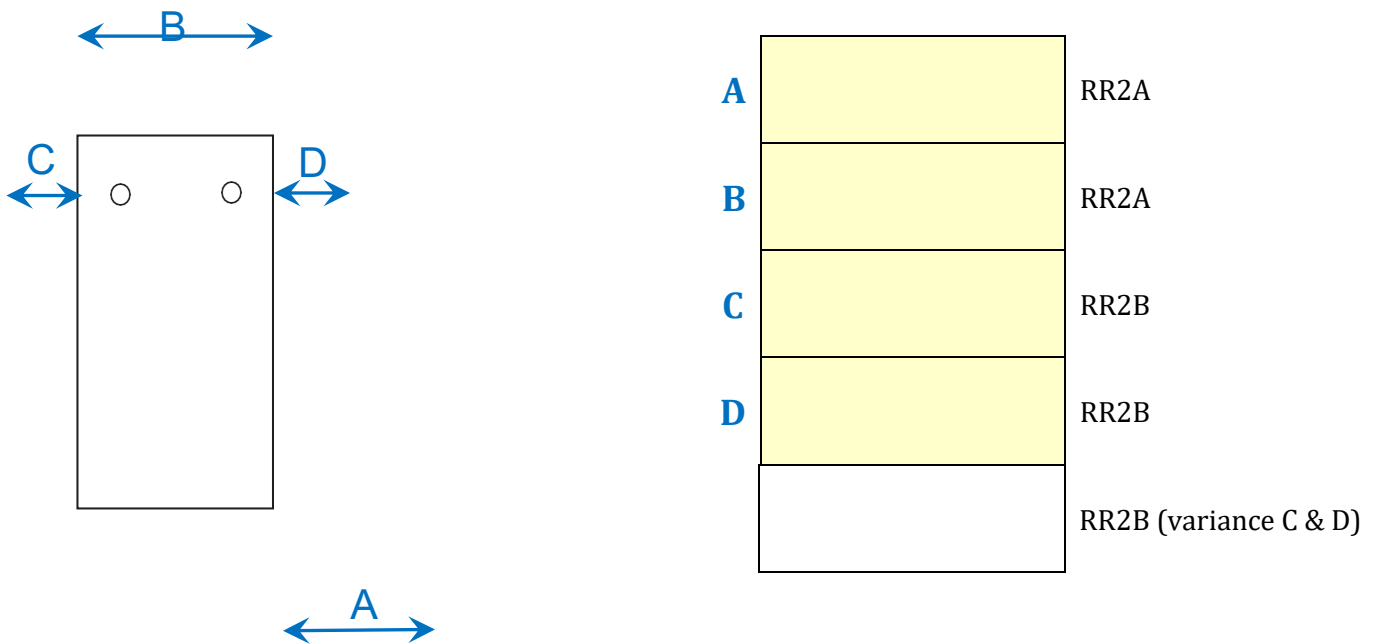
Total Score _____
As Calculated by Scoring System

EVENT 2 – ESTIMATING CLEARANCES (SCORESHEET)

• Official to complete yellow shaded areas only

COMPETITOR NUMBER:

Fault	Count	Penalty
2 - Realignment (directional change) or a Complete Stop per infringement		25 5 each
Incorrect Run Attempt (Penalty 19)		300 30 original breach, 100 10 per additional breach
Circle the appropriate 10 11 12 14 18 19		



	Estimation of Measurement A	Estimation of Measurement B	Parking of Appliance in Estimating Stands
Appliance Parked Duration			
Time Event Completed			
Officials Initials			
Competitors Initials			

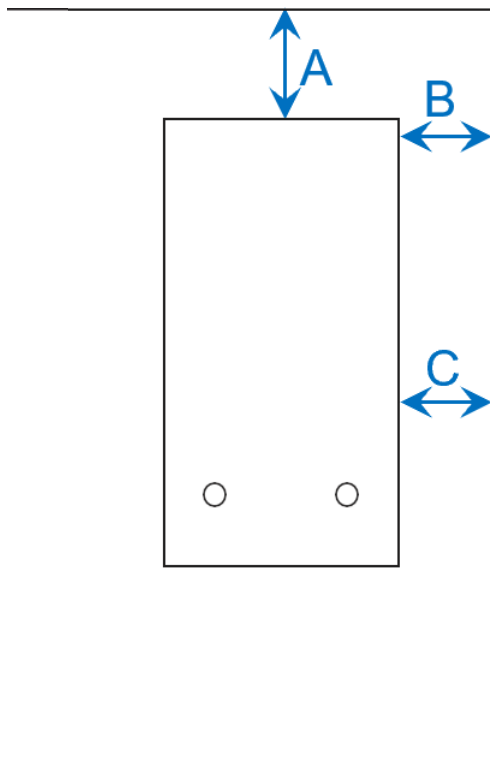
Total Score
As Calculated by Scoring System

EVENT 3 – PARALLEL PARKING (SCORESHEET)

Official to complete **yellow shaded areas only**

COMPETITOR NUMBER: _____

Fault	Count	Penalty
2 - Realignment (directional change) or a Complete Stop per infringement		25 5 each
4 - Tyre touching the no pass line		75 7.5 each
5 - Tyre touching the Kerb		100 10 each
Incorrect Run Attempt (Penalty 19)		300 30 original breach, 100 10 per additional breach
Circle the appropriate 10 11 12 13 14 18 19		



x = **1,500mm** ~~600mm~~ y = 300mm

A		RR3A (x - A)
B		RR3B (y - B)
C		RR3B (y - C)
		RR3C (variance B & C)

Appliance Parked Duration _____

Time Event Completed _____

Officials Initials _____

Competitors Initials _____

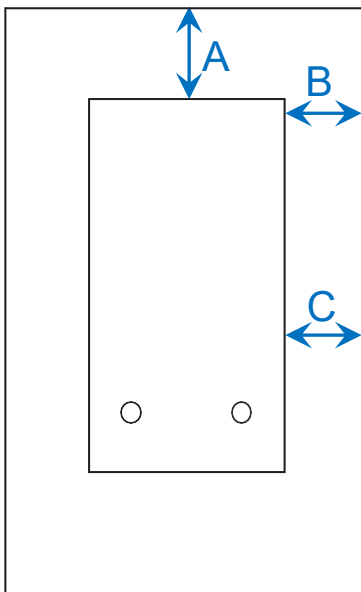
Total Score _____
As Calculated by Scoring System

EVENT 4 – BAY PARKING (SCORESHEET)

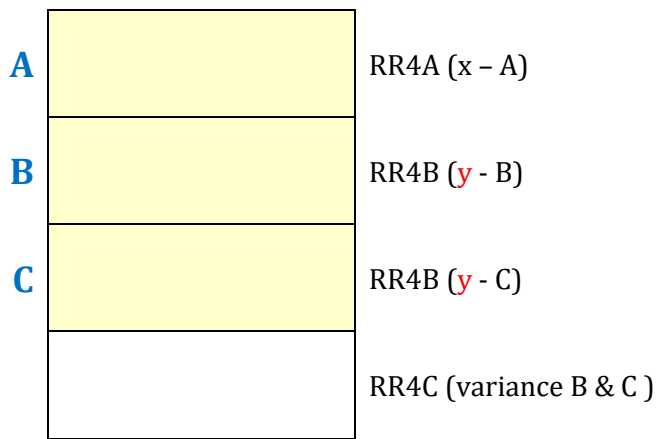
• Official to complete **yellow shaded areas only**

COMPETITOR NUMBER:

Fault	Count	Penalty
2 - Realignment (directional change) or a Complete Stop per infringement		25 5 each
3 - Striking a Cone		50 5 each
5 - Tyre touching the Kerb		100 10 each
6 - Failure to fully enter the Cone Area		10 each
Incorrect Run Attempt (Penalty 19)		300 30 original breach, 100 10 per additional breach
Circle the appropriate 10 11 12 14 18 19		



x = ~~300mm~~ 600mm y = 300mm



Appliance Parked Duration

Time Event Completed

Officials Initials

Competitors Initials

Total Score
As Calculated by Scoring System

EVENT 5 – STRAIGHT LINE DRIVING (SCORESHEET)

• Official to complete yellow shaded areas only

COMPETITOR NUMBER:

Fault	Count				Penalty
2 – Realignment (directional change) or a Complete Stop per infringement					25 5 each
3 – Striking a Cone	Sector 1	Sector 2	Sector 3	Sector 4	50 5 each
5 - Tyre touching the Kerb	Sector 1	Sector 2	Sector 3	Sector 4	100 10 each
6 – Failure to fully enter Cone Bay	Mid Event		Start Finish		100 10 each
7 - Entrance/Exit Coloured Cats Eyes'	Sector 1	Sector 2	Sector 3	Sector 4	10 2.5 Strike
8 - Middle Coloured Cats Eyes'	Sector 1	Sector 2	Sector 3	Sector 4	10 1 Strike
Incorrect Run Attempt (Penalty 19)					300 30 original breach, 100 10 per additional breach
Circle the appropriate 10 11 12 13 18 19					

Appliance Parked Duration

Time Event Completed

Officials Initials

Competitors Initials

Total Score
 As Calculated by Scoring System

EVENTS 6-9 - (SCORESHEET)

• Official to complete yellow shaded areas only

COMPETITOR NUMBER: _____

EXERCISE 6L – Shrinking Chicane

Fault	Count	Penalty
3 - Striking a Cone		50 5 each
9 - Speed _____ Less Than between 35-40km/h or 50-55km/h		100 10 each
Incorrect Run Attempt (Penalty 19)		300 30 original breach, 100 10 per additional breach
Circle the appropriate 10 11 13 15 17 18 19		

EXERCISE 6R – Shrinking Chicane

Fault	Count	Penalty
3 - Striking a Cone		50 5 each
9 - Speed _____ Less Than between 35-40km/h or 50-55km/h		100 10 each
Incorrect Run Attempt (Penalty 19)		300 30 original breach, 100 10 per additional breach
Circle the appropriate 10 11 13 15 17 18 19		

Note - If events 6-9 are all completed as one evolution, then sign off after Event 9.

Time Event Completed _____

Officials Initials _____

Competitors Initials _____

Total Score _____
As Calculated by Scoring System

EVENTS 6-9 - (SCORESHEET Continued)

• Official to complete yellow shaded areas only

COMPETITOR NUMBER:

EXERCISE 7 – Lane Change

Fault	Count	Penalty
3 - Striking a Cone		50 5 each
9 - Speed <u> </u> Less Than between 35-40km/h or 50-55km/h		100 10 each
Incorrect Run Attempt (Penalty 19)		300 30 original breach, 100 10 per additional breach
Circle the appropriate 10 11 13 15 16 17 18 19		

EXERCISE 8 – Weaving Lane Change

Fault	Count	Penalty
3 - Striking a Cone		50 5 each
9 - Speed <u> </u> Less Than between 35-40km/h or 50-55km/h		100 10 each
Incorrect Run Attempt (Penalty 19)		300 30 original breach, 100 10 per additional breach
Circle the appropriate 10 11 13 15 16 17 18 19		

EXERCISE 9 – Lane Change

Fault	Count	Penalty
3 - Striking a Cone		50 5 each
9 - Speed <u> </u> Less Than between 35-40km/h or 50-55km/h		100 10 each
Incorrect Run Attempt (Penalty 19)		300 30 original breach, 100 10 per additional breach
Circle the appropriate 10 11 13 15 16 17 18 19		

Time Event Completed

Officials Initials

Competitors Initials

Total Score
As Calculated by Scoring System

EVENT 10 – BRAKING (SCORESHEET)

• Official to complete yellow shaded areas only

COMPETITOR NUMBER:

Fault	Count	Measure / Penalty
Speed at brake km/h		km/h
Stopping distance in metres		metres
Reaction time in metres		metres
Subtotal of above measurements are multiplied x 10		
9 - Speed <u> </u> Less Than between 35-40km/h or 50-55km/h		100 10 each
Incorrect Run Attempt (Penalty 19)		300 30 original breach, 100 10 per additional breach
Circle the appropriate 10 11 13 15 17 18 19		

Time Event Completed

Officials Initials

Competitors Initials

Total Score
As Calculated by Scoring System

APPENDIX 1 – APPLIANCES MEASUREMENTS

Length 1 Appliances					
Appliance Type	Length	Width	Turning Circle	Source	Key - Length
Medium Single Cab Rural	6.22 m	2.20 m	11.10 m	FL2 GD	L1 = 7.3m
Medium Double Cab Rural	7.55 m	2.30 m	20.40 m	FL2 GD	L1 = 7.3m
Type 1 Iveco – Old	7.05 m	2.43 m	-	Previous Uses	L1 = 7.3m
Type 1 Iveco – New	7.56 m	2.35 m	16.25 m	FL2 GD	L1 = 7.3m
Length 2 Appliances					
Appliance Type	Length	Width	Turning Circle	Source	Key - Length
Type 2 Iveco – Old	7.96 m	2.43 m	-	Previous Uses	L2 = 8.0m
Type 2 Iveco – New	8.23 m	2.50 m	17.30 m	FL2 GD	L2 = 8.0m
Medium Water Tanker	7.70 m	2.49 m	16.60 m	FL2 GD	L2 = 8.0m
Type 3 Man	8.50 m	2.50 m	-	FL2 GD	L2 = 8.0m